

14.604
14.591

8.098
7.166
6.623
5.868
5.844
5.240
5.218
5.195
4.589
4.583
4.560
4.554
4.508
4.485
4.468
4.463
4.458
4.437
4.415
4.226
4.220
4.213
4.205
4.197
4.191
4.185

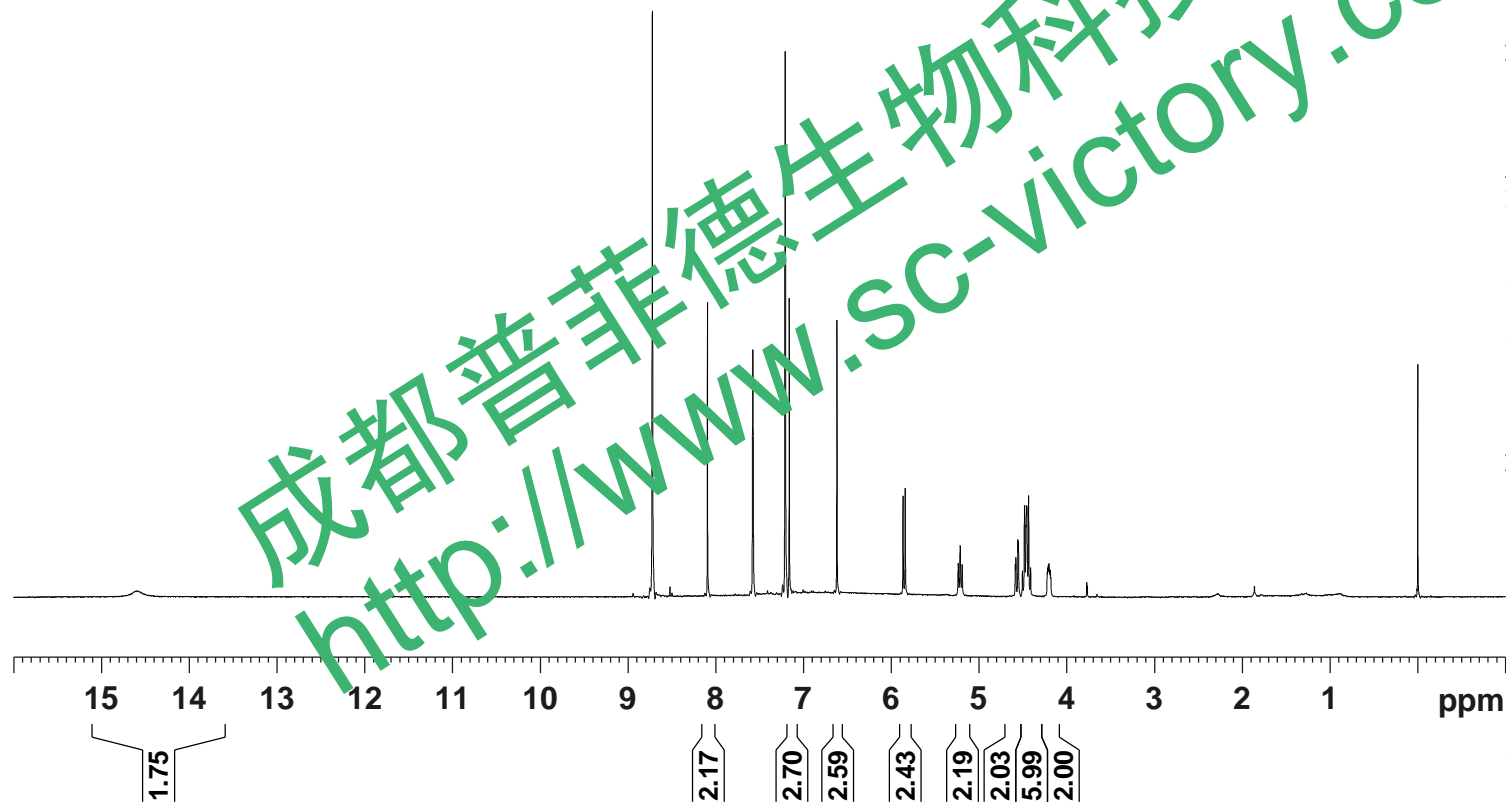


Current Data Parameters
NAME Y:\MangGuoGan-1H NMR C5D5N
EXPNO 2
PROCNO 1

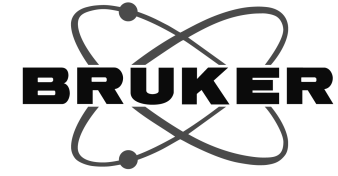
F2 - Acquisition Parameters
Date_ 20181010
Time 1.08
INSTRUM spect
PROBHD 5 mm PABBO BB/
PULPROG zg30
TD 65536
SOLVENT Pyr
NS 3
DS 2
SWH 8012.820 Hz
FIDRES 0.122266 Hz
AQ 4.0894465 sec
RG 116.95
DW 62.400 usec
DE 6.50 usec
TE 301.1 K
D1 1.00000000 sec
TD0 1

==== CHANNEL f1 =====
SFO1 400.1324710 MHz
NUC1 1H
P1 15.36 usec
PLW1 11.50800037 W

F2 - Processing parameters
SI 65536
SF 400.1299928 MHz
WDW EM
SSB 0
LB 0.30 Hz
GB 0
PC 1.00
SINO 0



成都普菲德生物科技有限公司
http://www.sc-victory.com



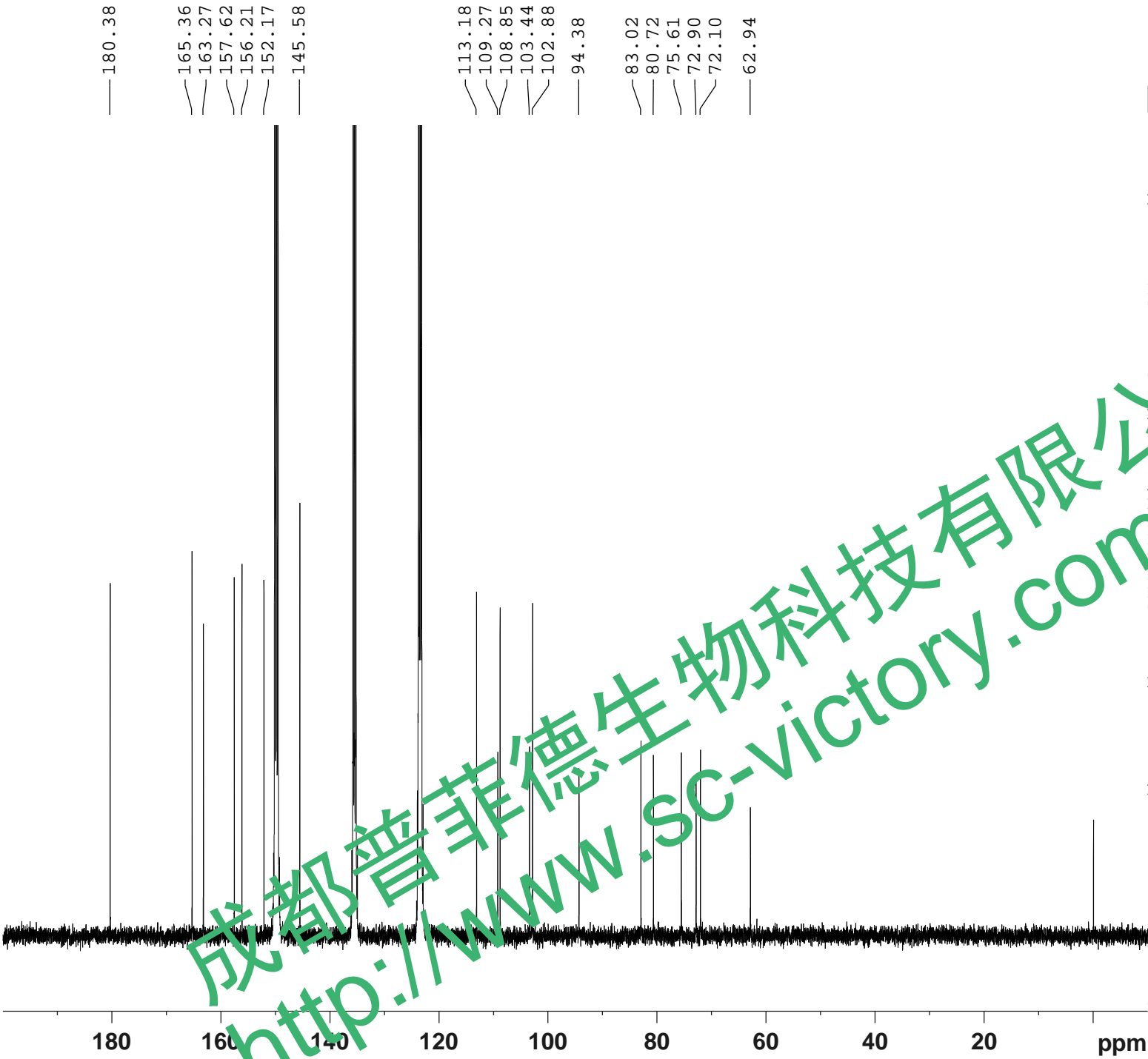
Current Data Parameters
 NAME YiMangGuoGan-13C NMR C5D5N
 EXPNO 2
 PROCNO 1

F2 - Acquisition Parameters
 Date_ 20181010
 Time 8.48
 INSTRUM spect
 PROBUS 5 mm PABBO BB/
 PULPROG zgig30
 TD 65536
 SOLVENT Pyr
 NS 8611
 DS 4
 SWH 28409.092 Hz
 FIDRES 0.433488 Hz
 AQ 1.1534336 sec
 RG 202.5
 RW 17.600 usec
 DE 6.50 usec
 TE 301.1 K
 D1 2.0000000 sec
 D11 0.03000000 sec
 TD0 1

==== CHANNEL f1 =====
 SFO1 100.6228298 MHz
 NUC1 13C
 P1 10.79 usec
 PLW1 51.00000000 W

==== CHANNEL f2 =====
 SFO2 400.1316005 MHz
 NUC2 1H
 CPDPRG[2] waltz16
 PCPD2 90.00 usec
 PLW2 11.50800037 W
 PLW12 0.33519000 W

F2 - Processing parameters
 SI 262144
 SF 100.6127438 MHz
 WDW EM
 SSB 0
 LB 1.00 Hz
 GB 0
 PC 1.40
 SINO 0



成都普菲德生物科技有限公司
<http://www.sc-victory.com>