

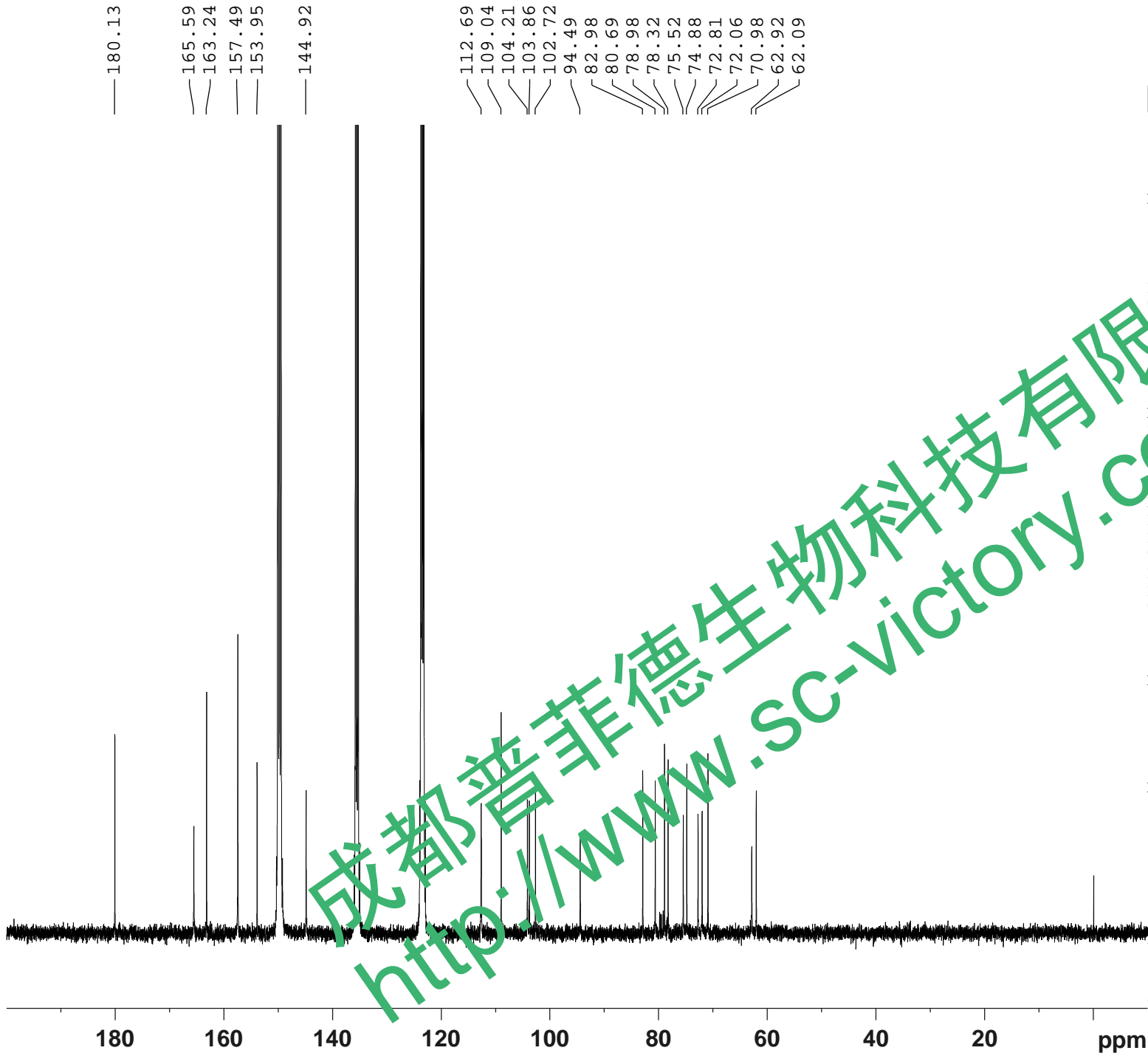
Current Data Parameters
 NAME XinMangGuoGan-1H NMR C5D5N
 EXPNO 2
 PROCNO 1

F2 - Acquisition Parameters
 Date_ 20181008
 Time 23.37
 INSTRUM spect
 PROBHD 5 mm PABBO BB/
 PULPROG zg30
 TD 65536
 SOLVENT Pyr
 NS 16
 DS 2
 SWH 8012.820 Hz
 FIDRES 0.122266 Hz
 AQ 4.0894465 sec
 RG 71.24
 DW 62.400 usec
 DE 6.50 usec
 TE 301.1 K
 D1 1.00000000 sec
 TD0 1

==== CHANNEL f1 =====
 SF01 400.1324710 MHz
 NUC1 1H
 P1 15.36 usec
 PLW1 11.50800037 W

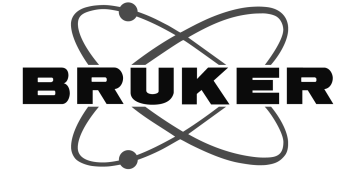
F2 - Processing parameters
 SI 65536
 SF 400.1299934 MHz
 WDW EM
 SSB 0
 LB 0.30 Hz
 GB 0
 PC 1.00
 SINO 0

成都普菲德生物科技有限公司
<http://www.sc-victory.com>



—180.13
 —165.59
 —163.24
 —157.49
 —153.95
 —144.92

—112.69
 —109.04
 —104.21
 —103.86
 —102.72
 —94.49
 —82.98
 —80.69
 —78.98
 —78.32
 —75.52
 —74.88
 —72.81
 —72.06
 —70.98
 —62.92
 —62.09



Current Data Parameters
 NAME XinMao GuoGan-13C NMR C5D5N
 EXPNO 2
 PROCNO 1

F2 - Acquisition Parameters
 Date_ 20181009
 Time 8.06
 INSTRUM spect
 PROBHD 5 mm PABBO BB/
 PULPROG zgig30
 TD 65536
 SOLVENT Pyr
 NS 8917
 DS 4
 SWH 24038.461 Hz
 FIDRES 0.366798 Hz
 AQ 1.3631488 sec
 RG 202.5
 DW 20.800 usec
 DE 6.50 usec
 TE 301.2 K
 D1 2.0000000 sec
 D11 0.0300000 sec
 TD0 1

==== CHANNEL f1 =====
 SFO1 100.6228298 MHz
 NUC1 13C
 P1 10.79 usec
 PLW1 51.0000000 W

==== CHANNEL f2 =====
 SFO2 400.1316005 MHz
 NUC2 1H
 CPDPRG[2] waltz16
 PCPD2 90.00 usec
 PLW2 11.50800037 W
 PLW12 0.33519000 W

F2 - Processing parameters
 SI 262144
 SF 100.6127452 MHz
 WDW EM
 SSB 0
 LB 1.00 Hz
 GB 0
 PC 1.40
 SINO 0