

```
Current Data Parameters
NAME      yixiafotagan-1
EXPNO     2
PROCNO    1

===== Acquisition Parameters =====
Date_     20161107
Time      12.13
INSTRUM   spect
PROBHD    5 mm PABBO BB-
PULPROG   zgpg30
TD        65536
SOLVENT   DMSO
NS        1024
DS        4
SWH       24038.461 Hz
FIDRES    0.366798 Hz
AQ        1.3631988 sec
RG        194.85
DW        20.800 usec
DE        6.50 usec
TE        300.8 K
D1        2.00000000 sec
D11       0.03000000 sec
TD0       1
```

```
===== CHANNEL f1 =====
NUC1      13C
P1        10.00 usec
PLW1     95.00000000 W
SFO1     100.6228293 MHz
```

```
===== CHANNEL f2 =====
CPDPRG2   waltz16
NUC2      1H
PCPD2     80.00 usec
PLW2     19.00000000 W
PLW12    0.24047001 W
PLW13    0.15390000 W
SFO2     400.1316005 MHz
```

```
F2 - Processing parameters
SI        32768
SF        100.6128130 MHz
WDW       EM
SSB       0
LB        1.00 Hz
GB        0
PC        1.40
```

成都普菲德生物科技有限公司
http://www.sc-victory.com

13.820

8.109
 6.926
 6.904
 6.816
 4.908
 4.783
 4.723
 4.031
 4.016
 4.004
 3.993
 3.906
 3.877
 3.857
 3.697
 3.669
 3.607
 3.500
 3.375
 3.253
 2.504
 2.500
 2.496

-0.004

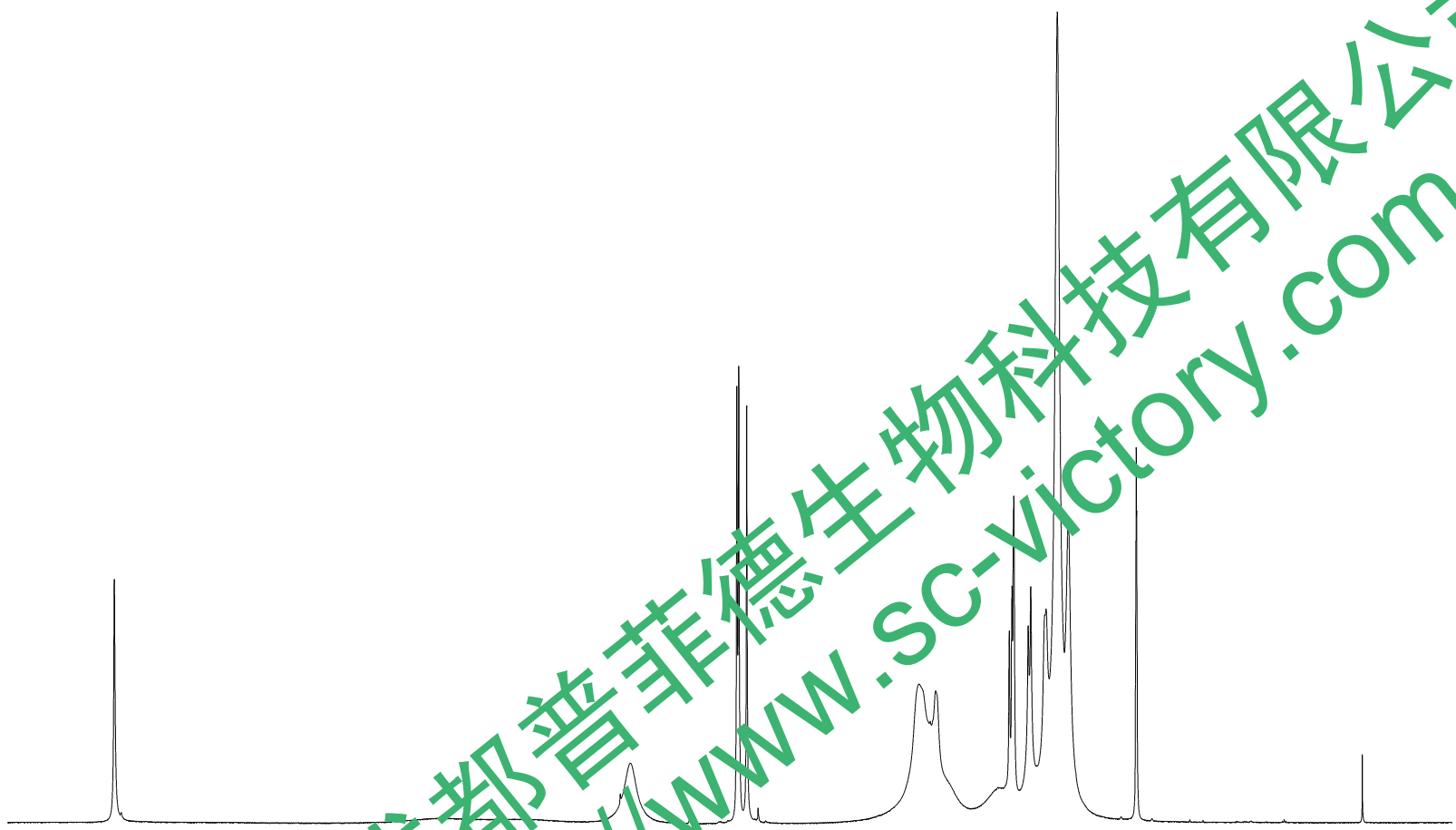


Current Data Parameters
 NAME yixiafotagan-1
 EXPNO 1
 PROCNO 1

F2 - Acquisition Parameters
 Date_ 20161107
 Time 12.10
 INSTRUM spect
 PROBHD 5 mm PABBO BB-
 PULPROG zg30
 TD 65536
 SOLVENT DMSO
 NS 16
 DS 2
 SWH 8223.685 Hz
 FIDRES 0.125483 Hz
 AQ 3.9846387 sec
 RG 52.45
 DW 60.800 usec
 DE 6.50 usec
 TE 300.9 K
 D1 1.00000000 sec
 TD0 1

==== CHANNEL f1 =====
 NUC1 1H
 P1 9.00 usec
 PLW1 19.00000000 W
 SFO1 400.1324710 MHz

F2 - Processing parameters
 SI 65536
 SF 400.1300031 MHz
 WDW EM
 SSB 0
 LB 0.30 Hz
 GB 0
 PC 1.00



14 13 12 11 10 9 8 7 6 5 4 3 2 1 0 ppm

1.11
 2.00
 2.02
 1.11
 9.08
 1.44
 2.97
 2.91
 2.90
 4.23

成都普菲德生物科技有限公司
<http://www.sc-victory.com>