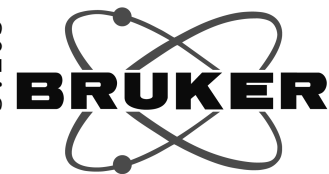


7.678  
7.672  
7.557  
7.536  
7.508  
7.477  
7.219  
7.198  
7.193  
5.991  
5.960  
4.944  
4.924  
3.850  
3.844  
3.820  
3.814  
3.727  
3.713  
3.697  
3.684  
3.569  
3.565  
3.559  
3.554  
3.550  
3.545  
3.540  
3.535  
3.531  
3.526  
3.471  
3.453  
3.449  
3.444  
3.438  
3.429  
3.410  
3.345  
3.289  
3.283  
3.278  
3.273  
3.265



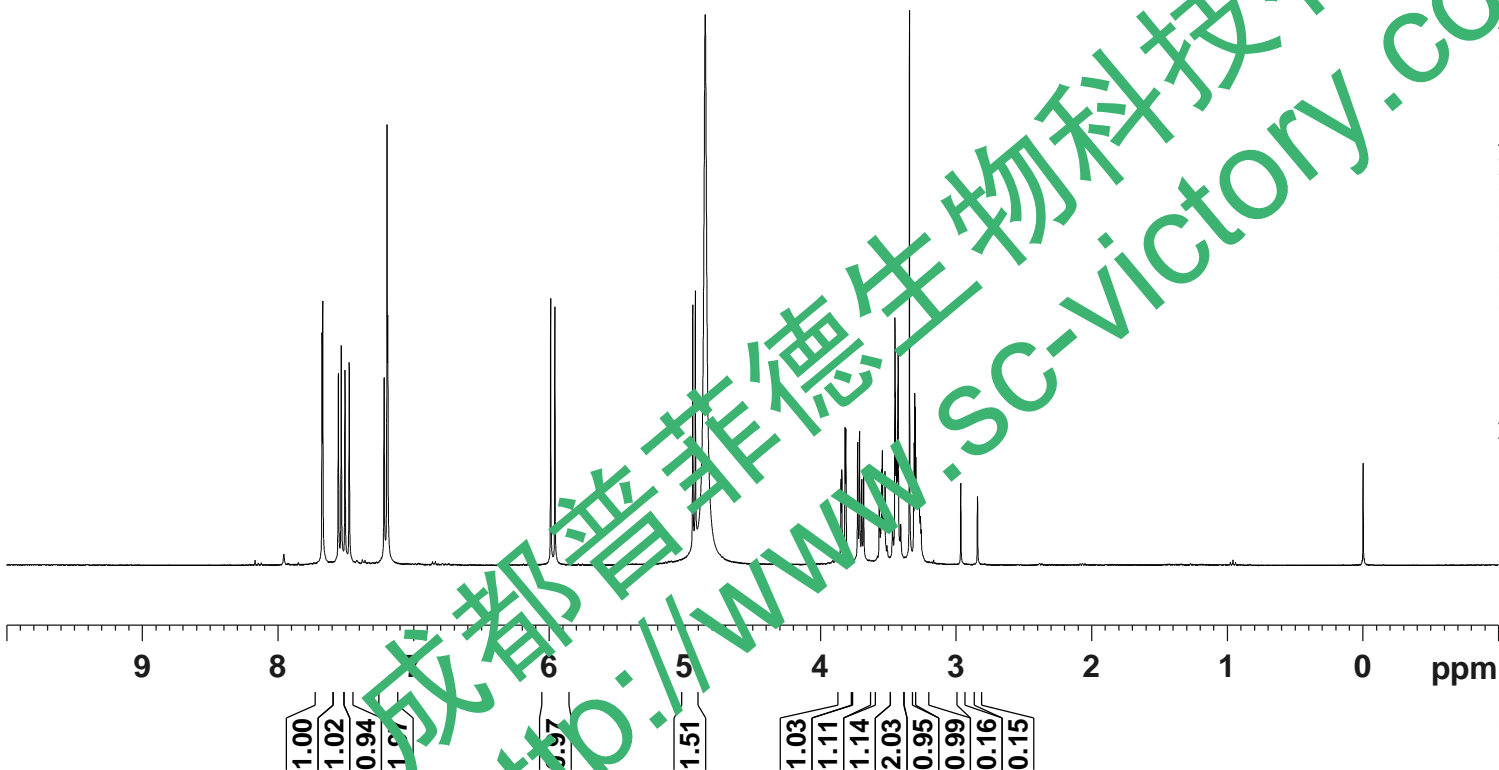
Current Data Parameters  
 NAME BGZ 2#-1H NMR CD3OD  
 EXPNO 7  
 PROCNO 1

F2 - Acquisition Parameters

INSTRUM spect  
 PROBHD 5 mm PABBO BB/  
 PULPROG zg30  
 TD 65536  
 SOLVENT MeOD  
 NS 16  
 DS 2  
 SWH 8012.820 Hz  
 FIDRES 0.122266 Hz  
 AQ 4.0894465 sec  
 RG 71.24  
 DW 62.400 usec  
 DE 6.50 usec  
 TE 301.2 K  
 D1 1.00000000 sec  
 TD0 1

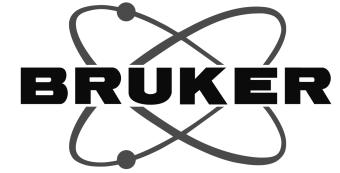
===== CHANNEL f1 =====  
 SFO1 400.1324710 MHz  
 NUC1 1H  
 P1 14.79 usec  
 PLW1 11.50800037 W

F2 - Processing parameters  
 SI 65536  
 SF 400.1300090 MHz  
 WDW EM  
 SSB 0  
 LB 0.30 Hz  
 GB 0  
 PC 1.00  
 SR 8.98 Hz



成都普菲德生物科技有限公司  
<http://www.SC-victory.com>

—171.18  
 —158.36  
 —150.24  
 —146.01  
 —139.70  
 —127.65  
 —123.40  
 —121.02  
 —107.71  
 —106.28  
 —105.63  
 —78.22  
 —78.02  
 —75.39  
 —71.28  
 —62.57



Current Data Parameters  
 NAME PGZ 2#-13C NMR CD3OD  
 EXPNO 8  
 PROCNO 1

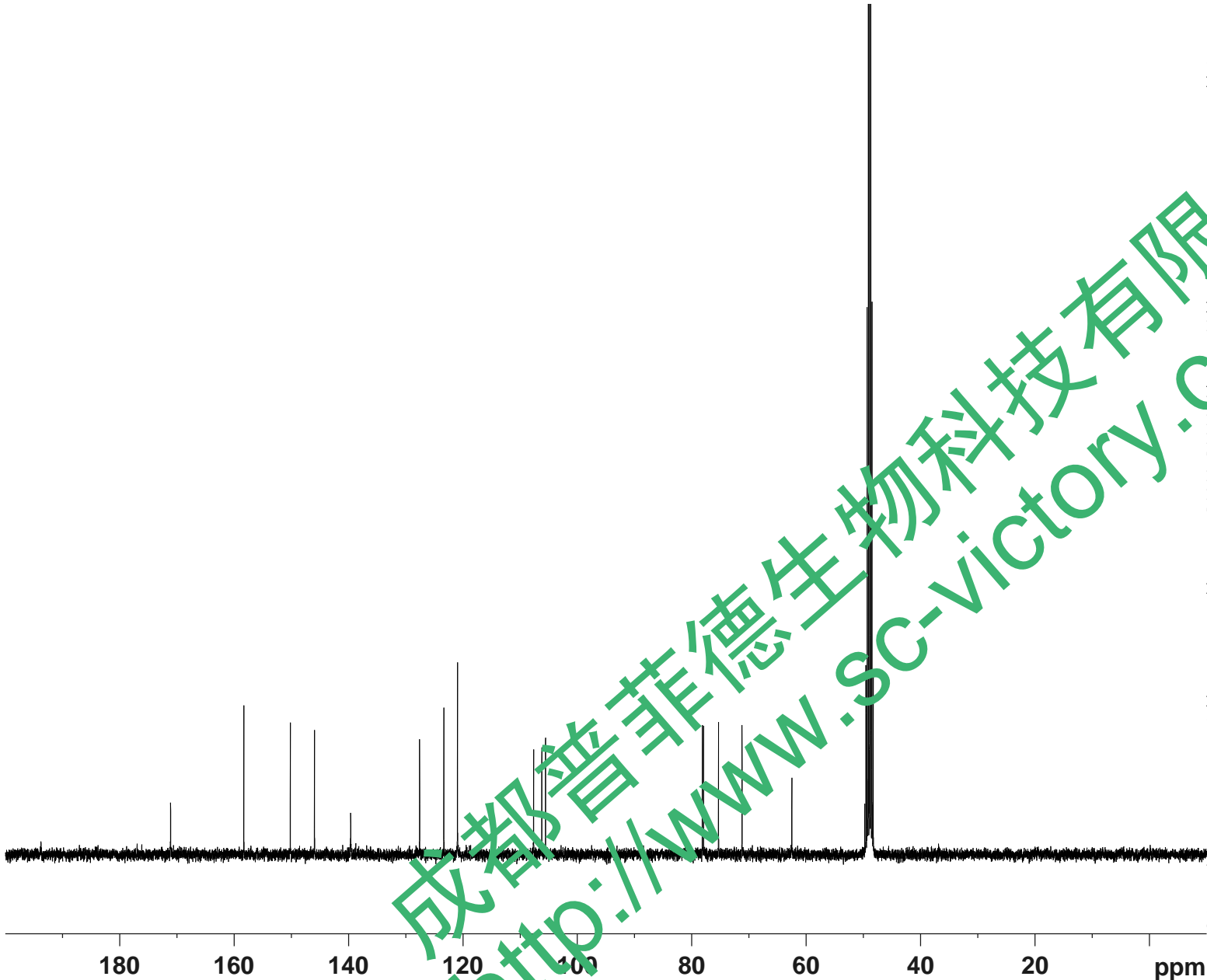
F2 - Acquisition Parameters

INSTRUM spect  
 PROBHD 5 mm PABBO BB/  
 PULPROG zgig30  
 PD 65536  
 SOLVENT MeOD  
 NS 472  
 DS 4  
 SWH 24038.461 Hz  
 FIDRES 0.366798 Hz  
 AQ 1.3631488 sec  
 RG 202.5  
 DW 20.800 usec  
 DE 6.50 usec  
 TE 301.1 K  
 D1 2.0000000 sec  
 D11 0.0300000 sec  
 TD0 1

==== CHANNEL f1 =====  
 SFO1 100.6228298 MHz  
 NUC1 13C  
 P1 10.13 usec  
 PLW1 51.0000000 W

==== CHANNEL f2 =====  
 SFO2 400.1316005 MHz  
 NUC2 1H  
 CPDPRG[2] waltz16  
 PCPD2 90.00 usec  
 PLW2 11.50800037 W  
 PLW12 0.31077999 W

F2 - Processing parameters  
 SI 262144  
 SF 100.6126327 MHz  
 WDW EM  
 SSB 0  
 LB 1.00 Hz  
 GB 0  
 PC 1.40  
 SR -136.26 Hz



成都普菲德生物科技有限公司  
<http://www.sc-victory.com>