

Current Data Parameters

EXPNO 20
PROCNO 1

F2 - Acquisition Parameters

INSTRUM spect
PROBHD 5 mm PABBO BB/
PULPROG zg30
TD 65536
SOLVENT MeOD
NS 16
DS 2
SWH 12019.230 Hz
FIDRES 0.183399 Hz
AQ 2.7262976 sec
RG 30.94
DW 41.600 usec
DE 6.50 usec
TE 298.1 K
D1 1.00000000 sec
TD0 1

===== CHANNEL f1 =====
SFO1 600.2037065 MHz
NUC1 1H
P1 10.31 usec
PLW1 26.00200081 W

F2 - Processing parameters
SI 65536
SF 600.2000000 MHz
WDW EM
SSB 0
LB 0.30 Hz
GB 0
PC 1.00

²⁵C
⁵C
 2.36150
 2.35620
 2.3406
 2.3356
 2.2625
 2.2603
 2.2498
 2.1277
 2.1164
 2.1051
 2.0938
 2.0824
 1.8986
 1.8793
 1.8321
 1.8119
 1.6857
 1.6672
 1.6492
 1.6340
 1.5285
 1.5077
 1.4961
 1.4858
 1.4792
 1.4623
 1.4563
 1.4403
 1.4269
 1.4189
 1.4075
 1.3999
 1.3210
 1.3013
 1.2819
 1.1428
 1.1301
 1.0261
 1.0118
 1.0006
 0.9990
 0.9896
 0.9878
 0.8390
 0.8188
 0.7987



Current Data Parameters

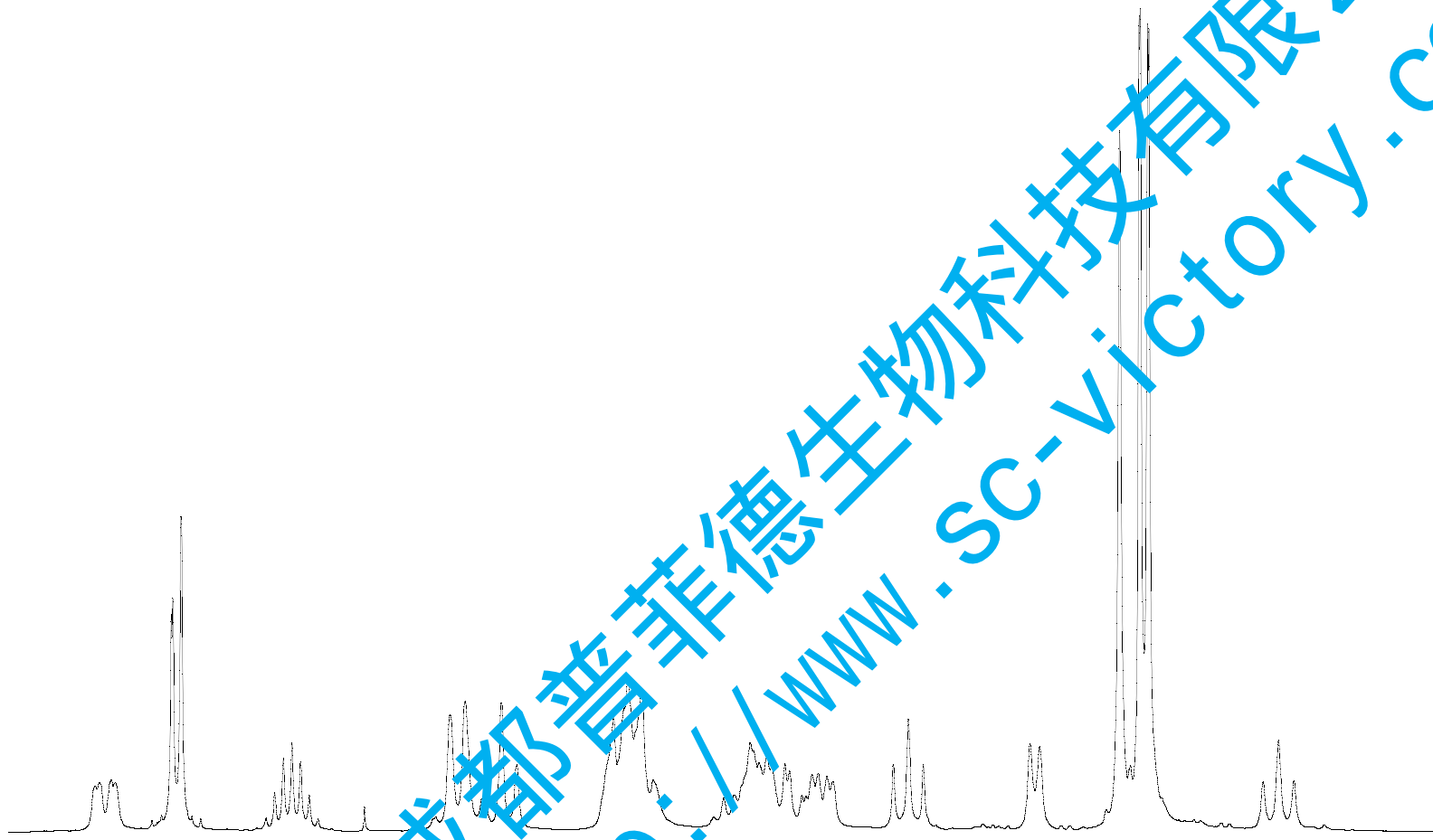
EXPNO 20
 PROCNO 1

F2 - Acquisition Parameters

INSTRUM spect
 PROBHD 5 mm PABBO BB/
 PULPROG zg30
 TD 65536
 SOLVENT MeOD
 NS 16
 DS 2
 SWH 12019.230 Hz
 FIDRES 0.183399 Hz
 AQ 2.7262976 sec
 RG 30.94
 DW 41.600 usec
 DE 6.50 usec
 TE 298.1 K
 D1 1.0000000 sec
 TD0 1

===== CHANNEL f1 =====
 SFO1 600.2037065 MHz
 NUC1 1H
 P1 10.31 usec
 PLW1 26.00200081 W

F2 - Processing parameters
 SI 65536
 SF 600.2000000 MHz
 WDW EM
 SSB 0
 LB 0.30 Hz
 GB 0
 PC 1.00



2.4 2.3 2.2 2.1 2.0 1.9 1.8 1.7 1.6 1.5 1.4 1.3 1.2 1.1 1.0 0.9 0.8 ppm

1.11 2.20 1.26 2.08 1.07 4.29 3.10 1.47 1.19 1.06 9.97 1.20

成都普菲德生物科技有限公司
 www.sc-victory.com

2503

4.1924
4.1809
4.1735
4.1661
4.1545

3.8955
3.8918
3.8754
3.8719
3.7995
3.7294
3.7204
3.7093
3.7005

3.5393
3.5243
3.5088
3.4100
3.3940
3.3791
3.3564
3.3528
3.3477
3.3439
3.3404
3.3343
3.3316
3.3289
3.3263
3.3236

2.7303
2.6583
2.6535
2.6380
2.6331



Current Data Parameters

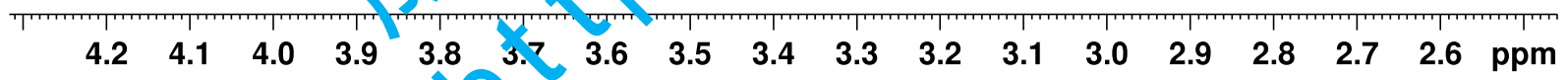
EXPNO 20
PROCNO 1

F2 - Acquisition Parameters

INSTRUM spect
PROBHD 5 mm PABBO BB/
PULPROG zg30
TD 65536
SOLVENT MeOD
NS 16
DS 2
SWH 12019.230 Hz
FIDRES 0.183399 Hz
AQ 2.7262976 sec
RG 30.94
DW 41.600 usec
DE 6.50 usec
TE 298.1 K
D1 1.00000000 sec
TD0 1

==== CHANNEL f1 =====
SFO1 600.2037065 MHz
NUC1 1H
P1 10.31 usec
PLW1 26.00200081 W

F2 - Processing parameters
SI 65536
SF 600.2000000 MHz
WDW EM
SSB 0
LB 0.30 Hz
GB 0
PC 1.00



1.16

1.24

1.19

1.19

1.13

1.09

2.61

1.00

1.13

成都普菲德生物科技有限公司
http://www.sc-victory.com

2503

— 5.2023

— 5.0979

4.6919
 4.6897
 4.6761
 4.6142
 4.6008

4.1924
 4.1809
 4.1735
 4.1661
 4.1545

3.8955
 3.8918
 3.8754
 3.8719
 3.7995
 3.7294
 3.7204
 3.7093
 3.7005



Current Data Parameters

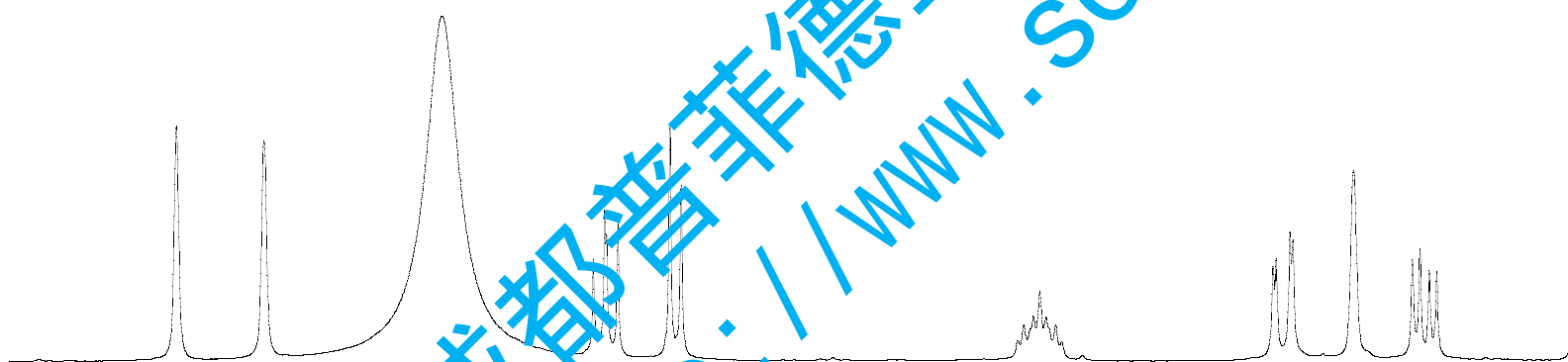
EXPNO 20
 PROCNO 1

F2 - Acquisition Parameters

INSTRUM spect
 PROBHD 5 mm PABBO BB/
 PULPROG zg30
 TD 65536
 SOLVENT MeOD
 NS 16
 DS 2
 SWH 12019.230 Hz
 FIDRES 0.183399 Hz
 AQ 2.7262976 sec
 RG 30.94
 DW 41.600 usec
 DE 6.50 usec
 TE 298.1 K
 D1 1.00000000 sec
 TD0 1

===== CHANNEL f1 =====
 SFO1 600.2037065 MHz
 NUC1 1H
 P1 10.31 usec
 PLW1 26.00200081 W

F2 - Processing parameters
 SI 65536
 SF 600.2000000 MHz
 WDW EM
 SSB 0
 LB 0.30 Hz
 GB 0
 PC 1.00



5.3 5.2 5.1 5.0 4.9 4.8 4.7 4.6 4.5 4.4 4.3 4.2 4.1 4.0 3.9 3.8 3.7 ppm

1.12
 1.29

1.32
 1.16

1.16

1.24
 1.19
 1.19

成都普菲德生物科技有限公司
<http://www.sc-victory.com>

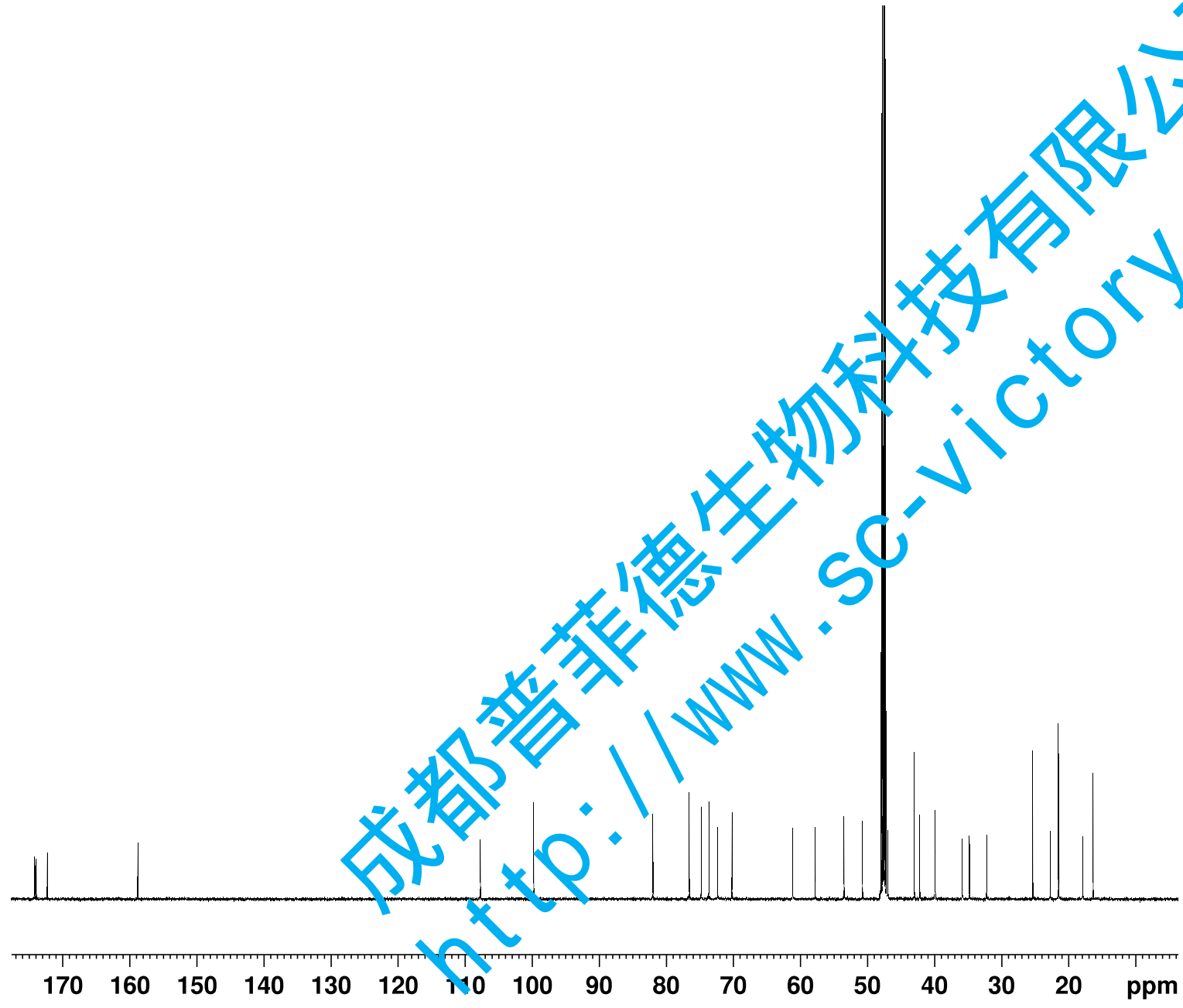
174.21
157.396
107.235

158.83

107.73

99.79

82.02
76.59
74.82
73.67
72.34
70.22
61.16
57.79
53.52
50.75
48.19
48.04
47.90
47.76
47.62
47.53
47.47
47.33
47.19
46.96
43.03
42.22
39.95
39.91
35.89
34.81
32.23
25.37
22.74
21.57
21.45
17.92
16.36



Current Data Parameters
EXLNO 21
PROCNO 1
2 - Acquisition Parameters

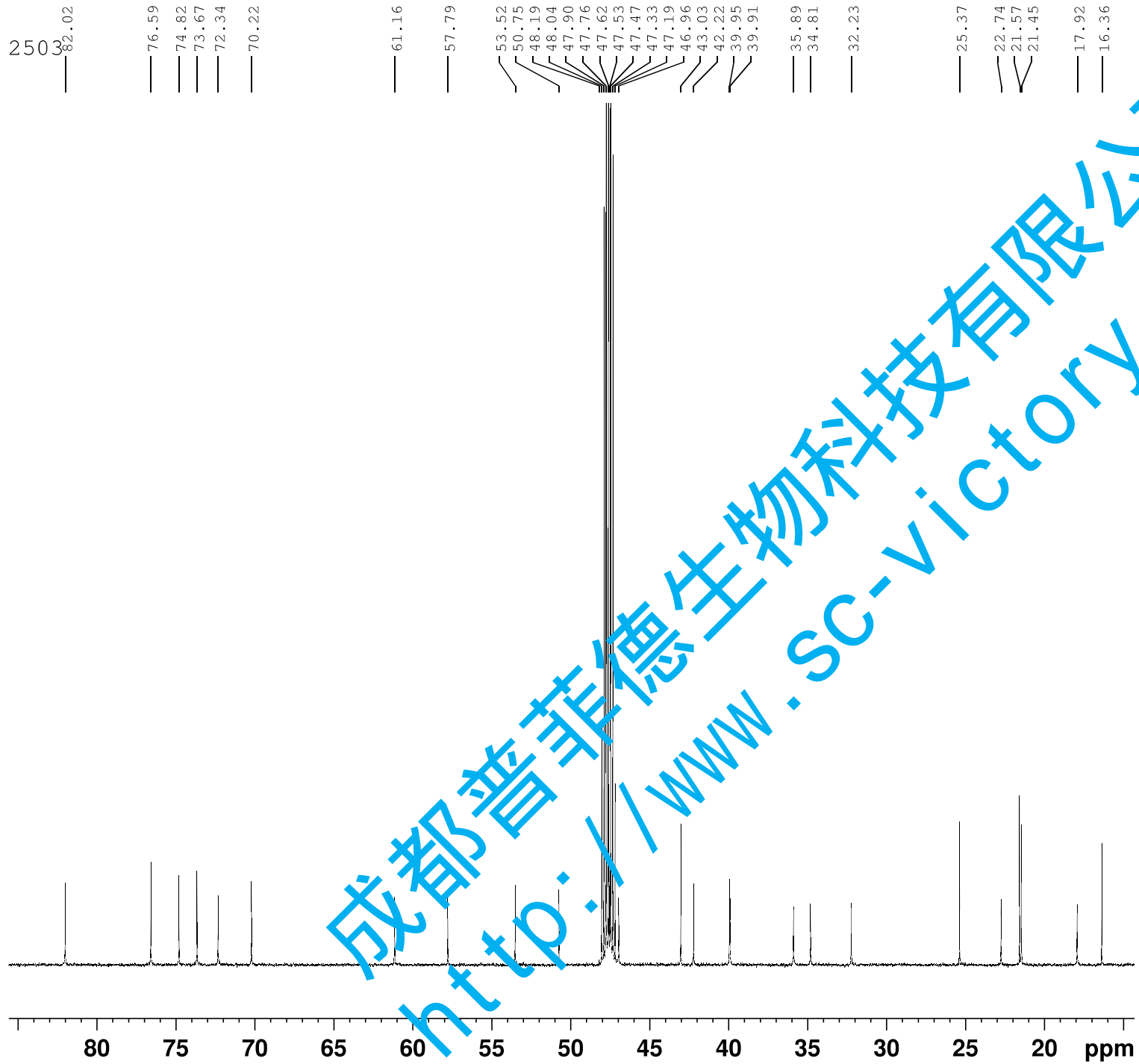
INSTRUM spect
PROBHD 5 mm PABBO BB/
PULPROG zgpg30
TD 65536
SOLVENT MeOD
NS 2048
DS 4
SWH 36057.691 Hz
FIDRES 0.550197 Hz
AQ 0.9087659 sec
RG 2050
DW 13.867 usec
DE 6.50 usec
TE 298.1 K
D1 2.00000000 sec
D11 0.03000000 sec
TD0 2

==== CHANNEL f1 =====
SFO1 150.9355014 MHz
NUC1 13C
P1 12.21 usec
PLW1 69.50199890 W

==== CHANNEL f2 =====
SFO2 600.2024008 MHz
NUC2 1H
CPDPRG[2] waltz16
PCPD2 70.00 usec
PLW2 26.00200081 W
PLW12 0.56405997 W
PLW13 0.27638999 W

F2 - Processing parameters
SI 32768
SF 150.9204100 MHz
WDW EM
SSB 0
LB 1.00 Hz
GB 0
PC 1.40

成都普菲德生物科技有限公司
http://www.sc-victory.com



Current Data Parameters

EXLNO 21
 PROCNO 1

F2 - Acquisition Parameters

INSTRUM spect
 PROBHD 5 mm PABBO BB/
 PULPROG zgpg30
 TD 65536
 SOLVENT MeOD
 NS 2048
 DS 4
 SWH 36057.691 Hz
 FIDRES 0.550197 Hz
 AQ 0.9087659 sec
 RG 2050
 DW 13.867 usec
 DE 6.50 usec
 TE 298.1 K
 D1 2.00000000 sec
 D11 0.03000000 sec
 TD0 2

===== CHANNEL f1 =====
 SFO1 150.9355014 MHz
 NUC1 13C
 P1 12.21 usec
 PLW1 69.50199890 W

===== CHANNEL f2 =====
 SFO2 600.2024008 MHz
 NUC2 1H
 CPDPRG[2] waltz16
 PCPD2 70.00 usec
 PLW2 26.00200081 W
 PLW12 0.56405997 W
 PLW13 0.27638999 W

F2 - Processing parameters
 SI 32768
 SF 150.9204100 MHz
 WDW EM
 SSB 0
 LB 1.00 Hz
 GB 0
 PC 1.40

成都普菲德生物科技有限公司
<http://www.sc-victory.com>

107.73

99.79

82.02

76.59

74.82

73.67

72.34

70.22

61.16

57.79

Current Data Parameters

EXLNO 21
PROCNO 1

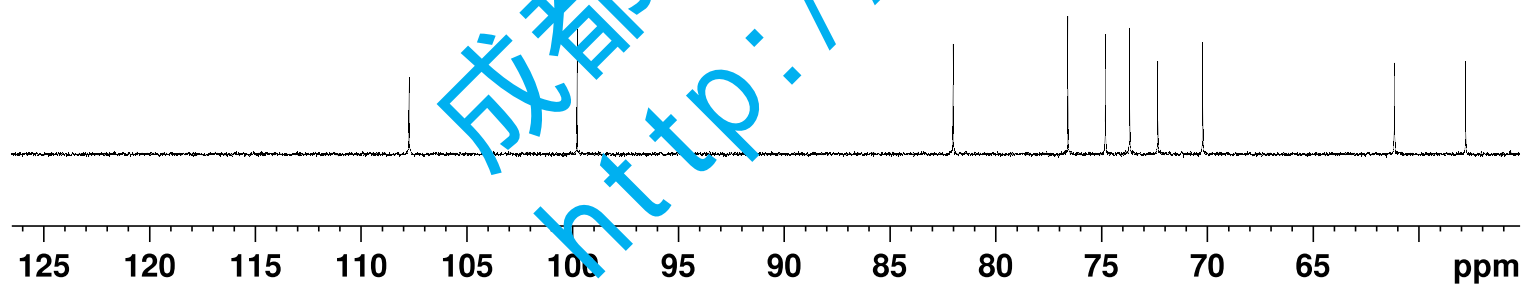
F2 - Acquisition Parameters

INSTRUM spect
PROBHD 5 mm PABBO BB/
PULPROG zgpg30
TD 65536
SOLVENT MeOD
NS 2048
DS 4
SWH 36057.691 Hz
FIDRES 0.550197 Hz
AQ 0.9087659 sec
RG 2050
DW 13.867 usec
DE 6.50 usec
TE 298.1 K
D1 2.00000000 sec
D11 0.03000000 sec
TD0 2

===== CHANNEL f1 =====
SFO1 150.9355014 MHz
NUC1 13C
P1 12.21 usec
PLW1 69.50199890 W

===== CHANNEL f2 =====
SFO2 600.2024008 MHz
NUC2 1H
CPDPRG[2] waltz16
PCPD2 70.00 usec
PLW2 26.00200081 W
PLW12 0.56405997 W
PLW13 0.27638999 W

F2 - Processing parameters
SI 32768
SF 150.9204100 MHz
WDW EM
SSB 0
LB 1.00 Hz
GB 0
PC 1.40



成都普菲德生物科技有限公司
http://www.sc-victory.com