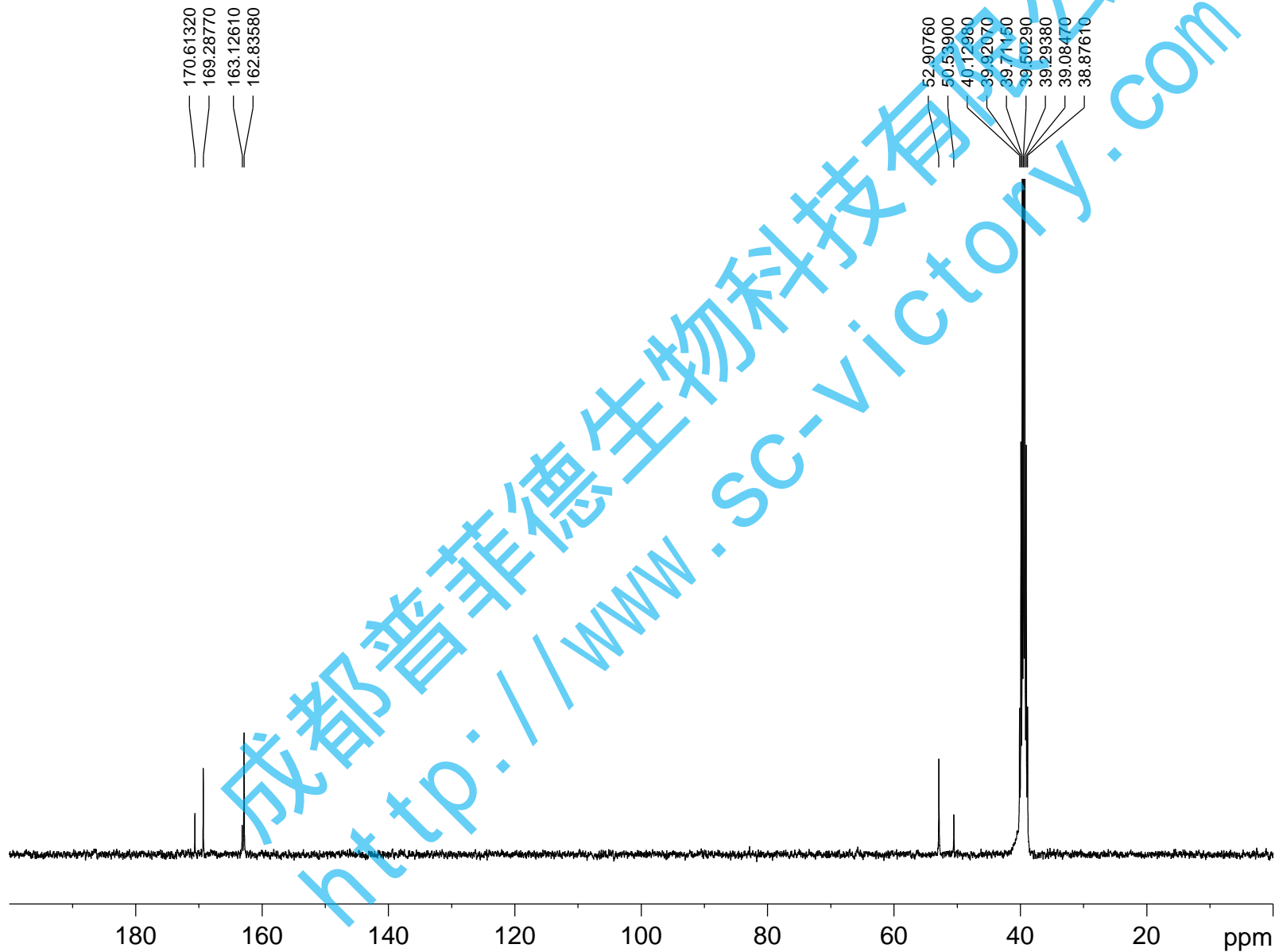


SQS-13C



Current Data Parameters
NAME Carbon
EXPNO 192
PROCNO 1

F2 - Acquisition Parameters

INSTRUM av400
PROBHD 5 mm DUL 13C-1
PULPROG zgdc
TD 65536
SOLVENT Pyr
NS 1024
DS 0
SWH 30120.482 Hz
FIDRES 0.459602 Hz
AQ 1.0879476 sec
RG 16384
DW 16.600 usec
DE 6.00 usec
TE 297.5 K
D1 2.00000000 sec
d11 0.03000000 sec
MCREST 0.00000000 sec
MCWRK 0.01500000 sec

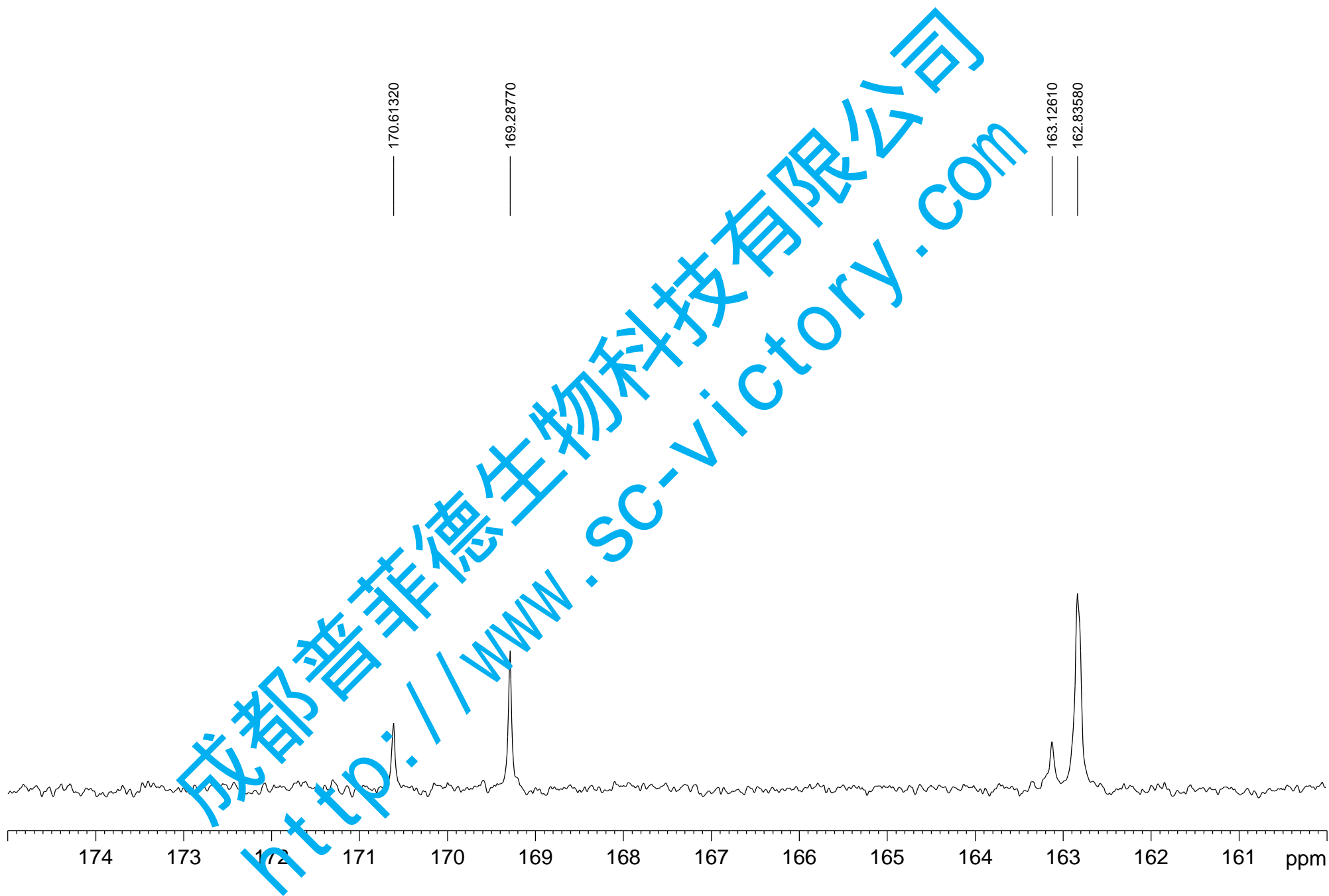
===== CHANNEL f1 =====
NUC1 13C
P1 9.00 usec
PL1 -2.00 dB
SFO1 100.6226304 MHz

===== CHANNEL f2 =====
CPDPRG2 waltz16
NUC2 1H
PCPD2 80.00 usec
PL2 -2.00 dB
PL12 14.77 dB
SFO2 400.1316005 MHz

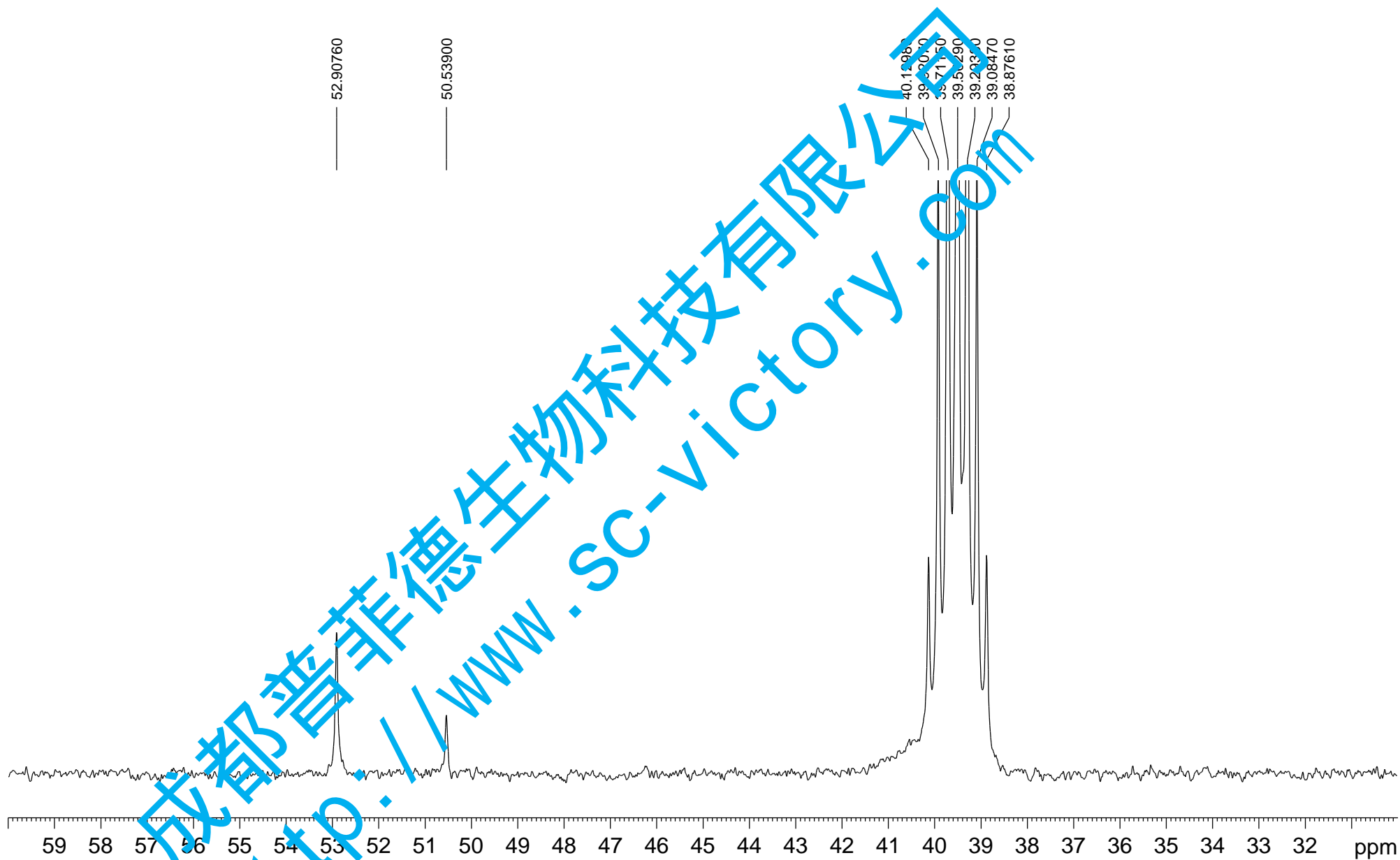
F2 - Processing parameters
SI 32768
SF 100.6127862 MHz
WDW EM
SSB 0
LB 3.00 Hz
GB 0
PC 1.40

1D NMR plot parameters
CX 20.00 cm
CY 10.00 cm
F1P 247.528 ppm
F1 24904.48 Hz
F2P -51.842 ppm
F2 -5216.00 Hz
PPMCM 14.96852 ppm/cm
HZCM 1506.02405 Hz/cm

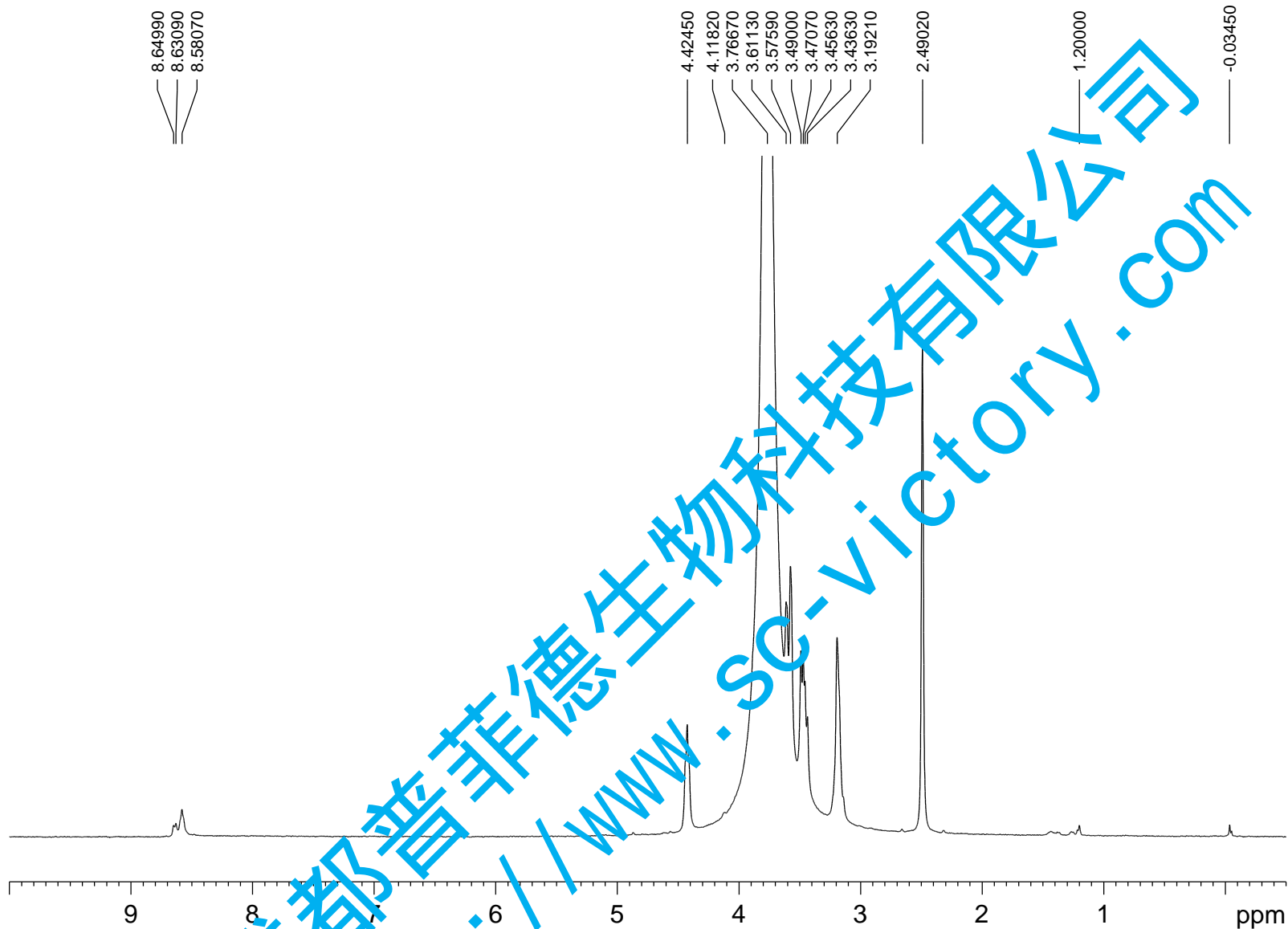
SQS-13C



SQS-13C



SQS-1H



Current Data Parameters
NAME Proton2
EXPNO 545
PROCNO 1

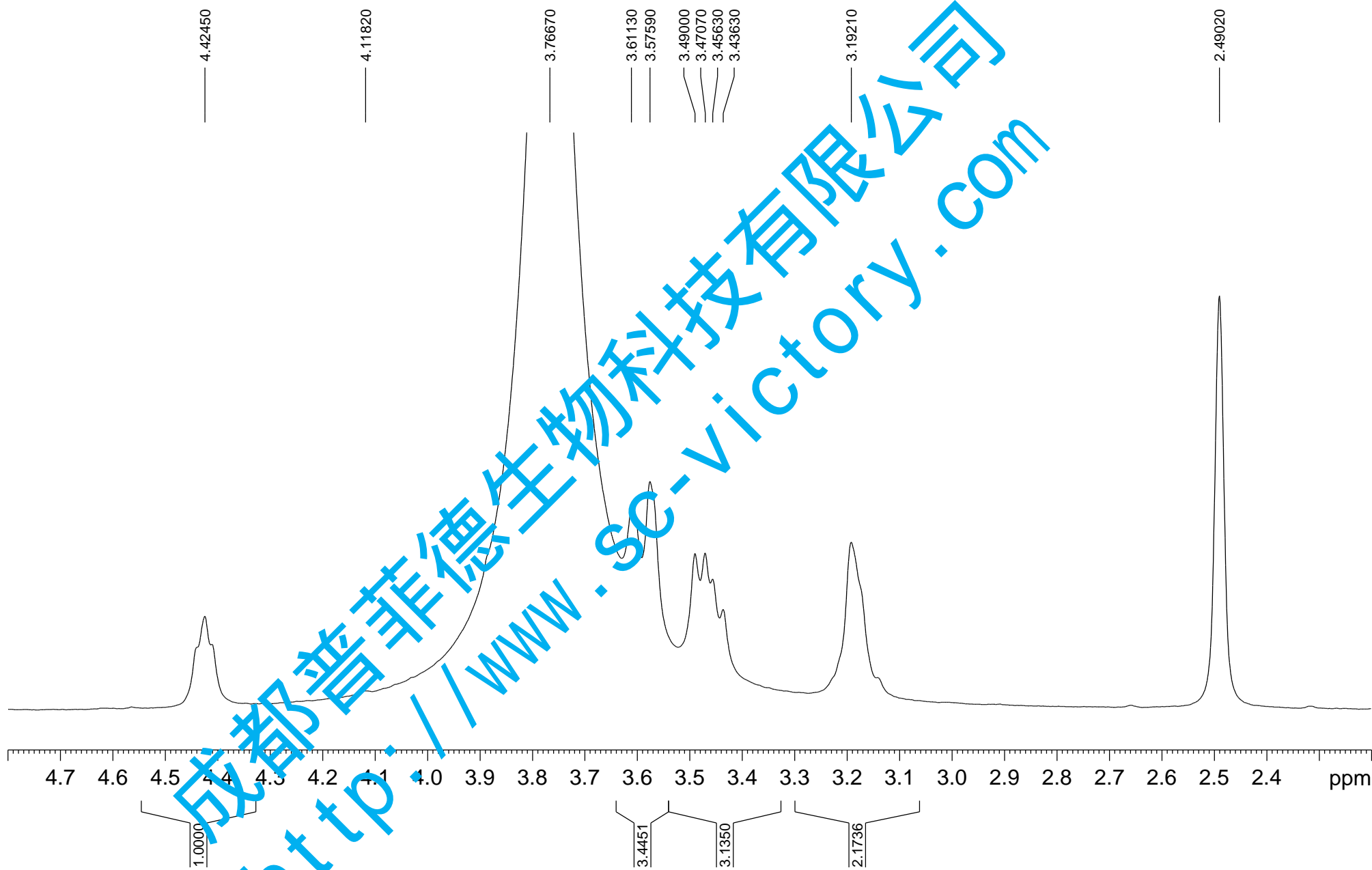
F2 - Acquisition Parameters

INSTRUM av400
PROBHD 5 mm DUL 13C-1
PULPROG zg30
TD 65536
SOLVENT DMSO
NS 16
DS 0
SWH 13966.480 Hz
FIDRES 0.213112 Hz
AQ 2.3462389 sec
RG 16
DW 35.800 usec
DE 6.00 usec
TE 296.9 K
D1 1.00000000 sec
MCREST 0.00000000 sec
MCWRK 0.01500000 sec

===== CHANNEL f1 =====
NUC1 1H
P1 11.60 usec
PL1 -2.00 dB
SFO1 400.1322394 MHz

F2 - Processing parameters
SI 32768
SF 400.1300075 MHz
WDW EM
SSB 0
LB 2.00 Hz
GB 0
PC 1.00

SQS-1H



SQS-1H

