

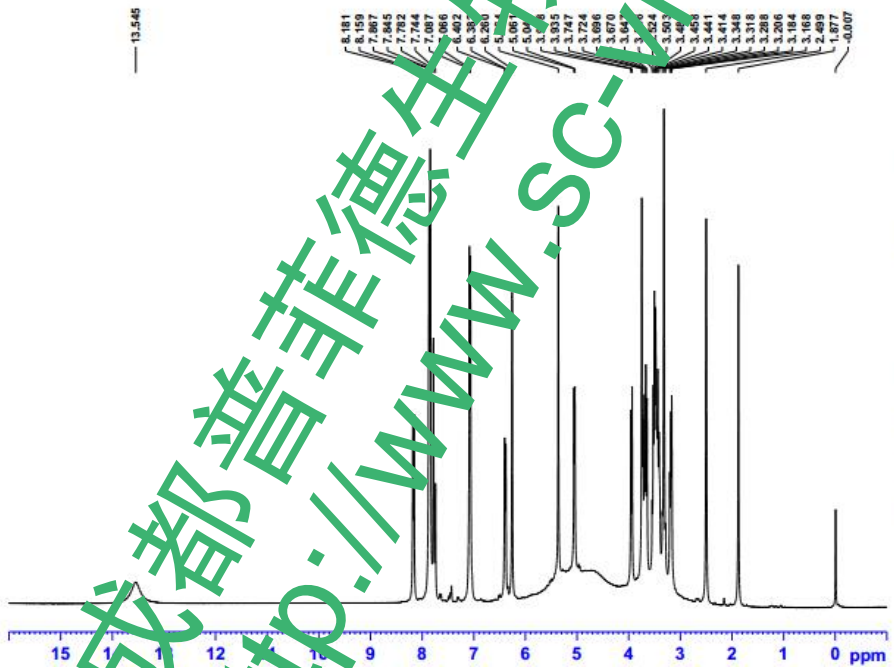
Current Data Parameters  
 NAME GC-4  
 EXPNO 1  
 PROCNO 1

F2 - Acquisition Parameters  
 Time 10.56  
 INSTRUM spect  
 PROBHD 5 mm DABBO BB-  
 PULPROG zgpg30  
 TD 65536  
 SOLVENT DMSO  
 NS 642  
 DS 4  
 FIDRES 24038.461 Hz  
 AQ 0.366798 Hz  
 SFO1 100.628293 MHz  
 PC 194.85  
 RC 20.800 usec  
 DE 6.50 usec  
 TE 299.0 K  
 D1 2.0000000 sec  
 D0 0.0300000 sec  
 TDO 1

CHANNEL f1  
 NUCL1 13C  
 P1 10.00 usec  
 PLW1 95.0000000 W  
 SFO1 100.628293 MHz

CHANNEL f2  
 CPDPRG2 waltz16  
 NUCL2 1H  
 PCPD2 80.00 usec  
 PLW2 19.0000000 W  
 PLW12 0.24047001 W  
 PLW13 0.1530000 W  
 SFO2 400.1316005 MHz

F2 - Processing parameters  
 SI 32768  
 SF 100.6128151 MHz  
 WDW EM  
 SSB 0  
 LB 1.00 Hz  
 GB 0  
 PC 1.40



Current Data Parameters  
 NAME GC-4  
 EXPNO 1  
 PROCNO 1

F2 - Acquisition Parameters  
 Time 10.34  
 INSTRUM spect  
 PROBHD 5 mm DABBO BB-  
 PULPROG zg30  
 TD 65536  
 SOLVENT DMSO  
 NS 16  
 DS 2  
 SWH 8223.685 Hz  
 FIDRES 0.125483 Hz  
 AQ 3.9846387 sec  
 RC 64.24  
 DW 60.800 usec  
 DE 6.50 usec  
 TE 298.9 K  
 D1 1.0000000 sec  
 TDO 1

CHANNEL f1  
 NUCL1 1H  
 P1 9.00 usec  
 PLW1 19.0000000 W  
 SFO1 400.1324710 MHz

F2 - Processing parameters  
 SI 65536  
 SF 400.1300036 MHz  
 WDW EM  
 SSB 0  
 LB 0.30 Hz  
 GB 0  
 PC 1.00

成都普菲德生物科技有限公司  
<http://WWW.SC-Victory.com>