

182.070

163.929  
162.519  
161.104  
160.366  
155.976

128.934  
121.597  
115.782  
104.595  
104.033  
102.428  
98.116

81.822  
78.655  
73.361  
70.825  
70.536  
61.282

40.145  
39.936  
39.728  
39.519  
39.310  
39.102  
38.893

Current Data Parameters  
NAME dujingsu  
EXPNO 2  
PROCNO 1

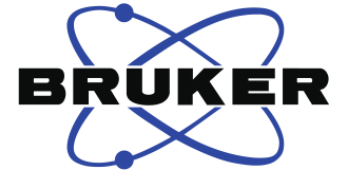
F2 - Acquisition Parameters

INSTRUM spect  
PROBHD 5 mm PABBO BB-  
PULPROG zgpg30  
TD 65536  
SOLVENT DMSO  
NS 1024  
DS 4  
SWH 24038.461 Hz  
FIDRES 0.366798 Hz  
AQ 1.3631988 sec  
RG 194.85  
DW 20.800 usec  
DE 6.50 usec  
TE 302.7 K  
D1 2.0000000 sec  
D11 0.0300000 sec  
TD0 1

==== CHANNEL f1 =====  
NUC1 13C  
P1 9.24 usec  
PLW1 95.0000000 W  
SFO1 100.6228293 MHz

==== CHANNEL f2 =====  
CPDPRG2 waltz16  
NUC2 1H  
PCPD2 80.00 usec  
PLW2 19.0000000 W  
PLW12 0.2529200 W  
PLW13 0.1618700 W  
SFO2 400.1316005 MHz

F2 - Processing parameters  
SI 32768  
SF 100.6128190 MHz  
WDW EM  
SSB 0  
LB 1.00 Hz  
GB 0  
PC 1.40



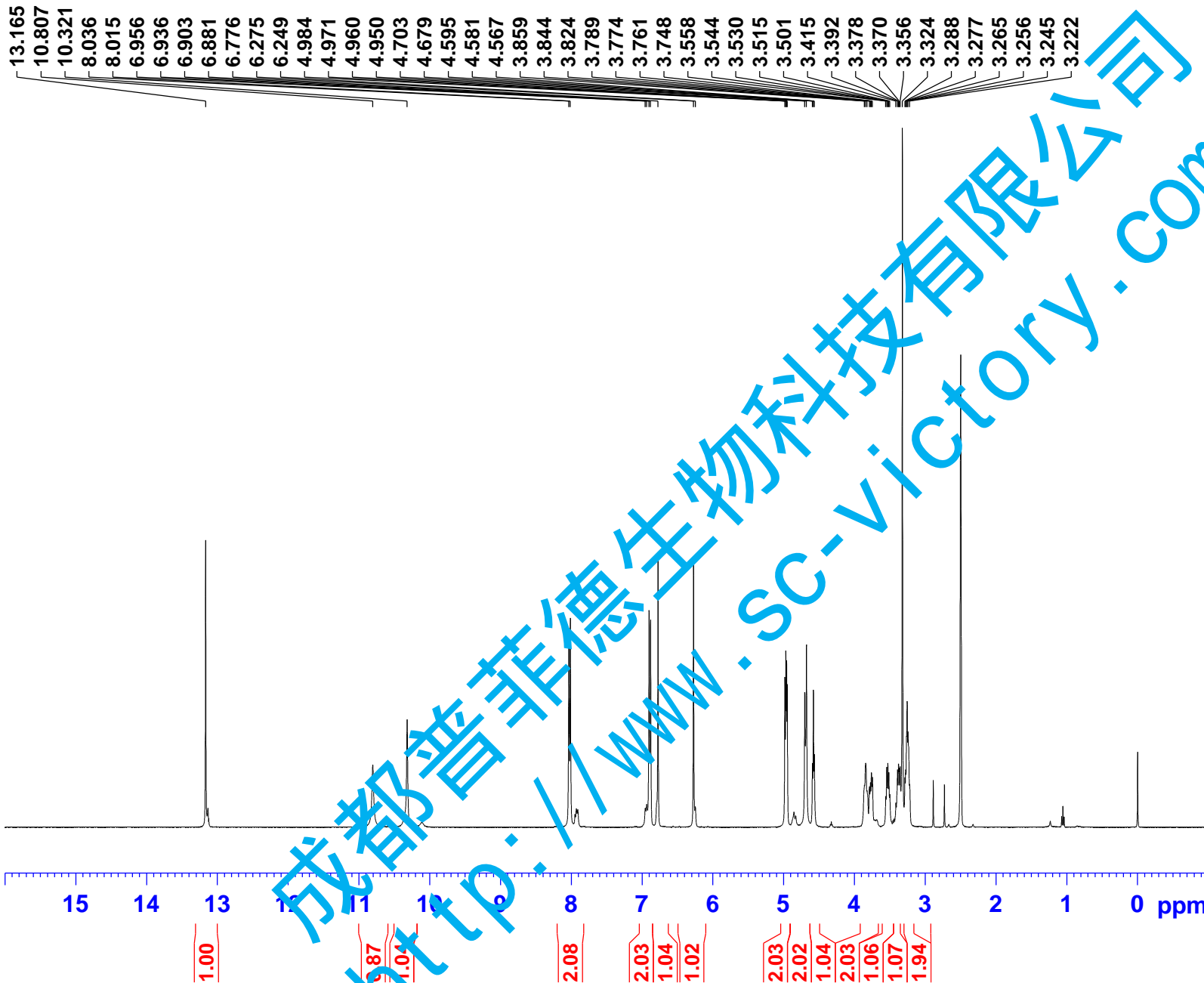
Current Data Parameters  
NAME dujingsu  
EXPNO 1  
PROCNO 1

F2 - Acquisition Parameters

INSTRUM spect  
PROBHD 5 mm PABBO BB-  
PULPROG zg30  
TD 65536  
SOLVENT DMSO  
NS 16  
DS 2  
SWH 8223.685 Hz  
FIDRES 0.125483 Hz  
AQ 3.9846387 sec  
RG 96.43  
DW 60.800 usec  
DE 6.50 usec  
TE 302.1 K  
D1 1.0000000 sec  
TD0 1

==== CHANNEL f1 =====  
NUC1 1H  
P1 9.23 usec  
PLW1 20.0000000 W  
SFO1 400.1324710 MHz

F2 - Processing parameters  
SI 65536  
SF 400.1300041 MHz  
WDW EM  
SSB 0  
LB 0.30 Hz  
GB 0  
PC 1.00



成都普菲德生物科技有限公司  
http://www.sc-victory.com