

Current Data Parameters  
NAME hulusuB  
EXPNO 1  
PROCNO 1

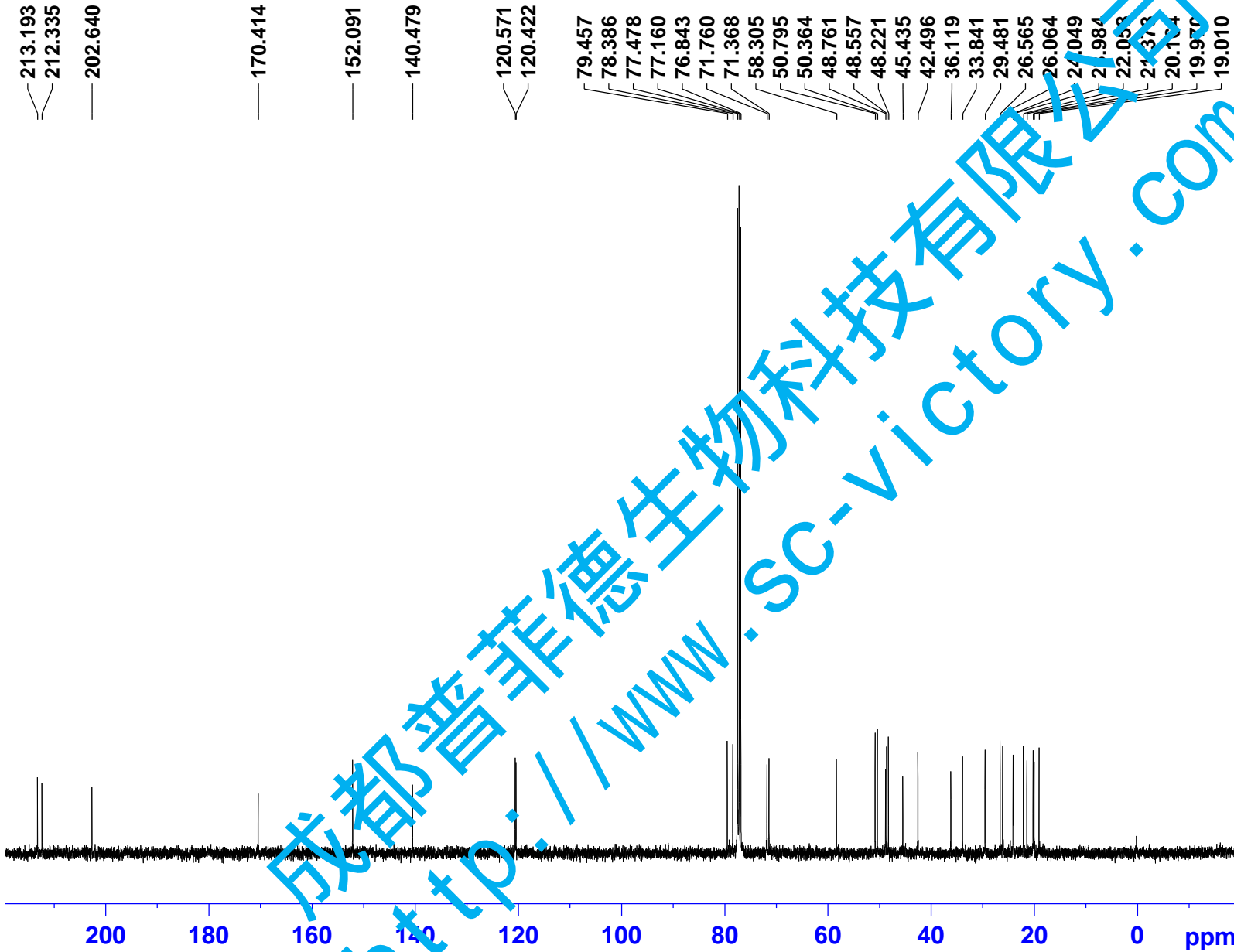
F2 - Acquisition Parameters

INSTRUM spect  
PROBHD 5 mm PABBO BB-  
PULPROG zg30  
TD 65536  
SOLVENT CDCl3  
NS 16  
DS 2  
SWH 8223.685 Hz  
FIDRES 0.125483 Hz  
AQ 3.9846387 sec  
RG 52.45  
DW 60.800 usec  
DE 6.50 usec  
TE 296.3 K  
D1 1.0000000 sec  
TD0 1

==== CHANNEL f1 =====  
NUC1 1H  
P1 9.23 usec  
PLW1 20.0000000 W  
SFO1 400.1324710 MHz

F2 - Processing parameters  
SI 65536  
SF 400.1300104 MHz  
WDW EM  
SSB 0  
LB 0.30 Hz  
GB 0  
PC 1.00

0.99 1.00 1.07 2.16 1.09 1.14 1.20 2.48 1.37 1.28 1.42 6.64 5.19 6.29 5.42 6.40 3.20 1.48 3.32 3.20



Current Data Parameters  
NAME hulusuB  
EXPNO 2  
PROCNO 1

F2 - Acquisition Parameters

INSTRUM spect  
PROBHD 5 mm PABBO BB-  
PULPROG zgpg30  
TD 65536  
SOLVENT CDCl3  
NS 324  
DS 4  
SWH 24038.461 Hz  
FIDRES 0.366798 Hz  
AQ 1.3631988 sec  
RG 194.85  
DW 20.800 usec  
DE 6.50 usec  
TE 296.8 K  
D1 2.0000000 sec  
D11 0.03000000 sec  
TD0 1

==== CHANNEL f1 =====  
NUC1 13C  
P1 9.24 usec  
PLW1 95.0000000 W  
SFO1 100.6228293 MHz

==== CHANNEL f2 =====  
CPDPRG2 waltz16  
NUC2 1H  
PCPD2 80.00 usec  
PLW2 19.0000000 W  
PLW12 0.2529200 W  
PLW13 0.1618700 W  
SFO2 400.1316005 MHz

F2 - Processing parameters  
SI 32768  
SF 100.6127571 MHz  
WDW EM  
SSB 0  
LB 1.00 Hz  
GB 0  
PC 1.40