

—13.013

—10.240

—7.751

—7.262

—3.976

—3.833

—3.817

—2.282



```

Current Data Parameters
NAME      ChengHuangJueMingSu 3#-1H NMR DMSO
EXPNO     1
PROCNO    1

```

F2 - Acquisition Parameters

```

INSTRUM    spect
PROBHD     5 mm PABBO BB/
PULPROG    zg30
TD         65536
SOLVENT    DMSO
NS         16
DS         2
SWH        8012.820 Hz
FIDRES     0.122266 Hz
AQ         4.0894465 sec
RG         163.31
DW         62.400 usec
DE         6.50 usec
TE         301.2 K
D1         1.00000000 sec
TDO        1

```

```

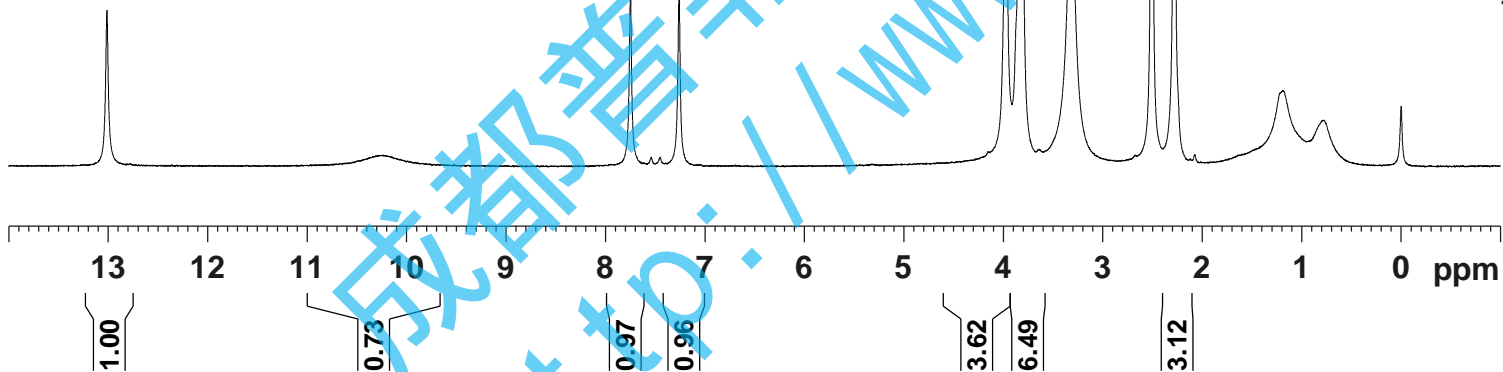
===== CHANNEL f1 =====
SF01       400.1324710 MHz
NUC1       1H
P1         14.79 usec
PLW1       11.50800037 W

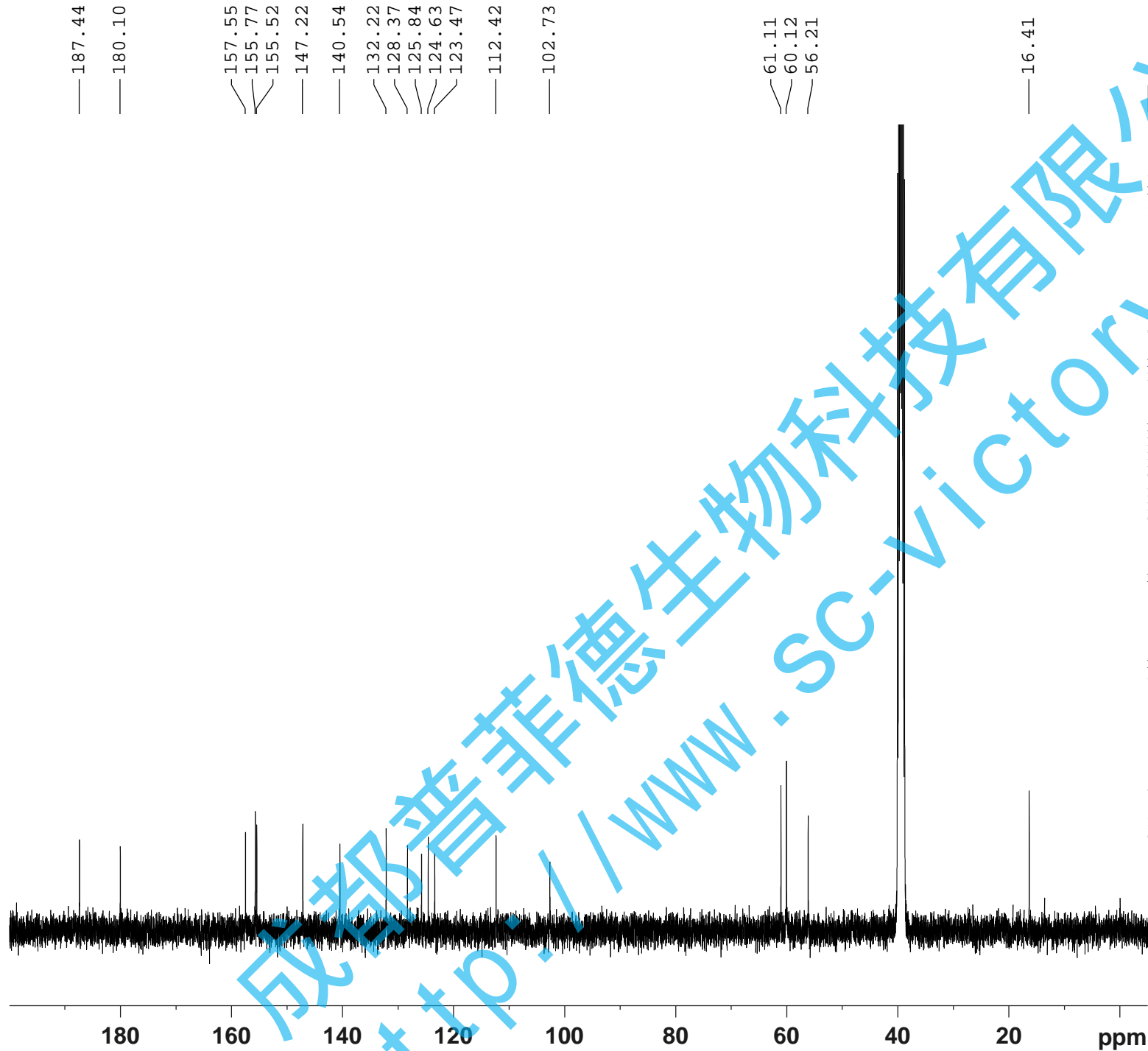
```

```

F2 - Processing parameters
SI         65536
SF         400.1300009 MHz
WDW        EM
SSB        0
LB         0.30 Hz
GB         0
PC         1.00
SR         0.90 Hz

```

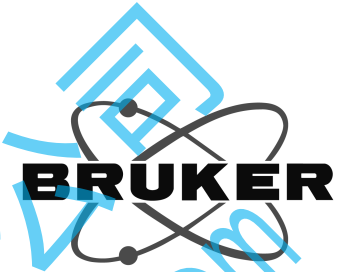




— 187.44
 — 180.10
 — 157.55
 — 155.77
 — 155.52
 — 147.22
 — 140.54
 — 132.22
 — 128.37
 — 125.84
 — 124.63
 — 123.47
 — 112.42
 — 102.73

— 61.11
 — 60.12
 — 56.21

— 16.41



Current Data Parameters
 NAME ChengHuangJueMingSu 3#-13C NMR DMSO
 EXPNO 1
 PROCNO 1

F2 - Acquisition Parameters

INSTRUM spect
 PROBHD 5 mm PABBO BB/
 PULPROG zgig30
 TD 65536
 SOLVENT DMSO
 NS 1487
 DS 4
 SWH 24038.461 Hz
 FIDRES 0.366798 Hz
 AQ 1.3631488 sec
 RG 202.5
 DW 20.800 usec
 DE 6.50 usec
 TE 301.2 K
 D1 2.0000000 sec
 D11 0.0300000 sec
 TD0 1

==== CHANNEL f1 =====
 SFO1 100.6228298 MHz
 NUC1 13C
 P1 10.13 usec
 PLW1 51.0000000 W

==== CHANNEL f2 =====
 SFO2 400.1316005 MHz
 NUC2 1H
 CPDPRG[2] waltz16
 PCPD2 90.00 usec
 PLW2 11.50800037 W
 PLW12 0.31077999 W

F2 - Processing parameters
 SI 262144
 SF 100.6128233 MHz
 WDW EM
 SSB 0
 LB 1.00 Hz
 GB 0
 PC 1.40
 SR 54.33 Hz