

Current Data Parameters
NAME 11802
EXPNO 2
PROCNO 1

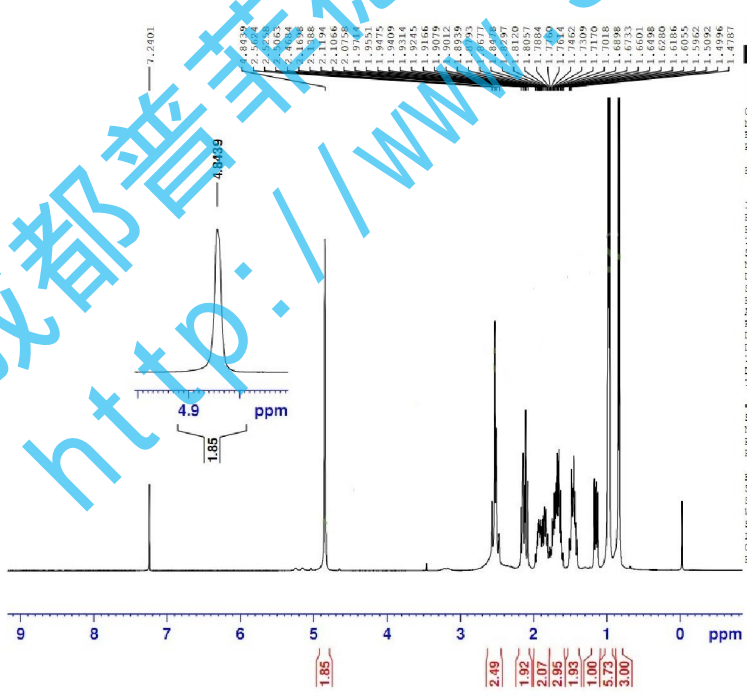
F2 - Acquisition Parameters

INSTRUM spect
PROBHD 5 mm PABBO BB-
PULPROG zgpg30
TD 65536
SOLVENT CDCl3
NS 64
DS 4
SWH 10038.481 Hz
FIDRES 0.26798 Hz
AQ 1.1631488 sec
RG 203
EM 20.800 usec
DE 6.00 usec
TE 298.2 K
D1 2.0000000 sec
D11 0.0000000 sec
TD 1

----- CHANNEL f1 -----
NUC1 100.6233333 MHz
NUC2 13C
P1 9.20 usec
PLN1 60.0000000 W

----- CHANNEL f2 -----
NUC2 400.1316095 MHz
NUC2 1H
CPDPRG12 waltz16
SCPD2 8000 usec
PLN2 15.0000000 W
PLN12 0.3187699 W
PLN13 0.2881199 W

F2 - Processing parameters
SI 32768
SF 100.6127456 MHz
WDW EM
SSB 0
LB 1.00 Hz
GB 0
PC 1.40



Current Data Parameters
NAME 11802
EXPNO 1
PROCNO 1

F2 - Acquisition Parameters

INSTRUM spect
PROBHD 5 mm PABBO BB-
PULPROG zg30
TD 65536
SOLVENT CDCl3
NS 16
DS 2
SWH 8012.820 Hz
FIDRES 0.122266 Hz
AQ 4.0894465 sec
RG 64
EM 62.400 usec
DE 6.50 usec
TE 298.0 K
D1 1.0000000 sec
D10 1

----- CHANNEL f1 -----
NUC1 400.1324710 MHz
NUC1 1H
P1 13.12 usec
PLN1 15.0000000 W

F2 - Processing parameters
SI 65536
SF 400.1300180 MHz
WDW EM
SSB 0
LB 0.30 Hz
GB 0
PC 1.00