

Bruker Avance 600

probe: 13C-1H DUL

TE: 300K

sample: CA-01

solvent: MeOD

spectrum: 13C

— 134.6333  
— 130.9839

∠ 106.1077  
∠ 106.0468

∠ 86.1193  
— 85.5991  
— 83.5520

∠ 78.3653  
— 78.1581  
— 75.8137

∠ 72.2892  
∠ 71.7929  
∠ 71.6993

∠ 65.7965  
— 65.2679  
— 62.8465

∠ 54.4111  
∠ 53.4953  
∠ 49.4336

∠ 49.1499  
∠ 48.4985  
— 46.9316

— 44.4784  
∠ 43.4081

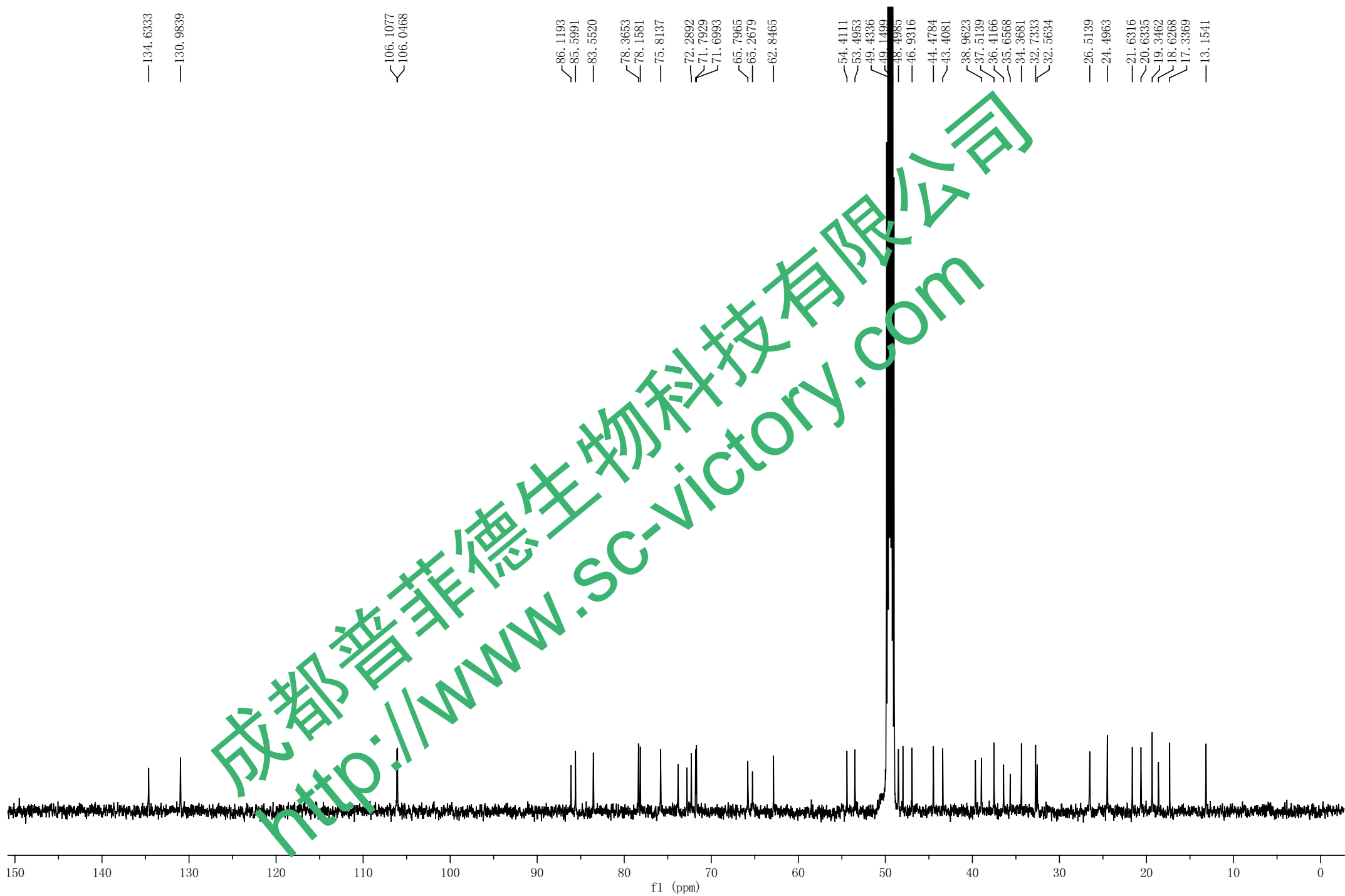
∠ 38.9623  
∠ 37.5139  
∠ 36.4166

∠ 35.6568  
— 34.3681  
∠ 32.7333

∠ 32.5634

— 26.5139  
— 24.4963

— 21.6316  
∠ 20.6335  
∠ 19.3462  
∠ 18.6268  
∠ 17.3369  
— 13.1541



Bruker Avance 600

probe: 13C-1H DUL

TE: 300K

sample: CA-01

solvent: MeOD

spectrum: 1H

5.9525  
5.9350

5.3884  
5.3836  
5.3711  
5.3665

4.5364  
4.5235

4.3698

4.1843  
4.1744

4.1675  
4.1580

3.8512  
3.8393

3.8196

3.6606  
3.6220

3.5630  
3.5071

3.2874  
3.2663

3.0494  
3.0372

2.9887

2.8562

2.0693  
2.0470

1.8497  
1.8122

1.7777  
1.7347

1.5386  
1.4486

1.4183

1.2902

1.1873

1.0362  
0.9499

0.8955  
0.8674

0.8073

0.7041

1.00

1.02

1.96

1.01

1.02

1.02

2.06

6.28

1.98

2.38

1.00

1.03

1.03

1.00

1.43

2.81

1.21

2.76

0.49

1.89

9.00

3.13

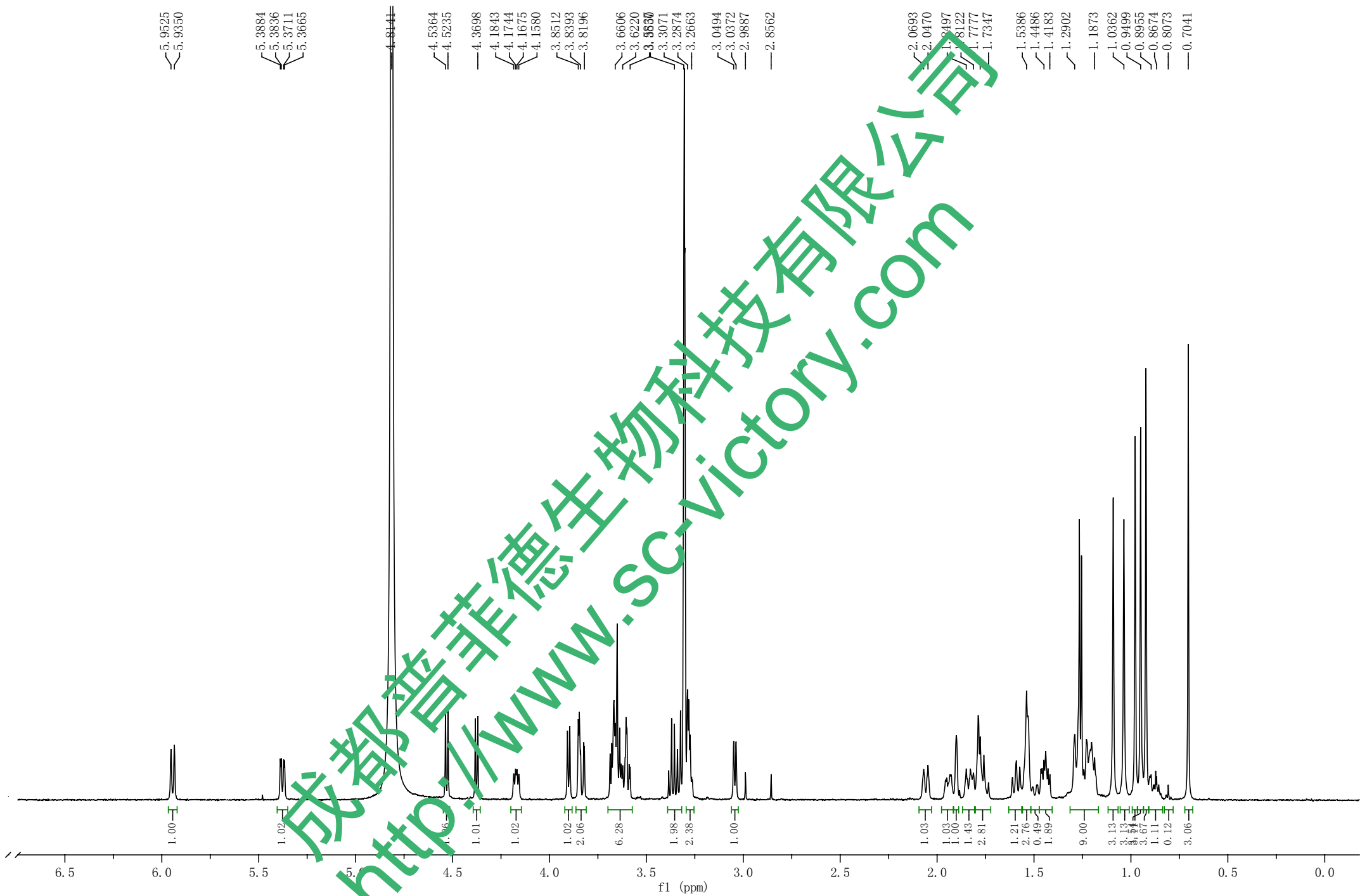
3.13

3.67

1.11

0.12

3.06



成都普菲德生物科技有限公司  
http://www.sc-victory.com