

Display Report

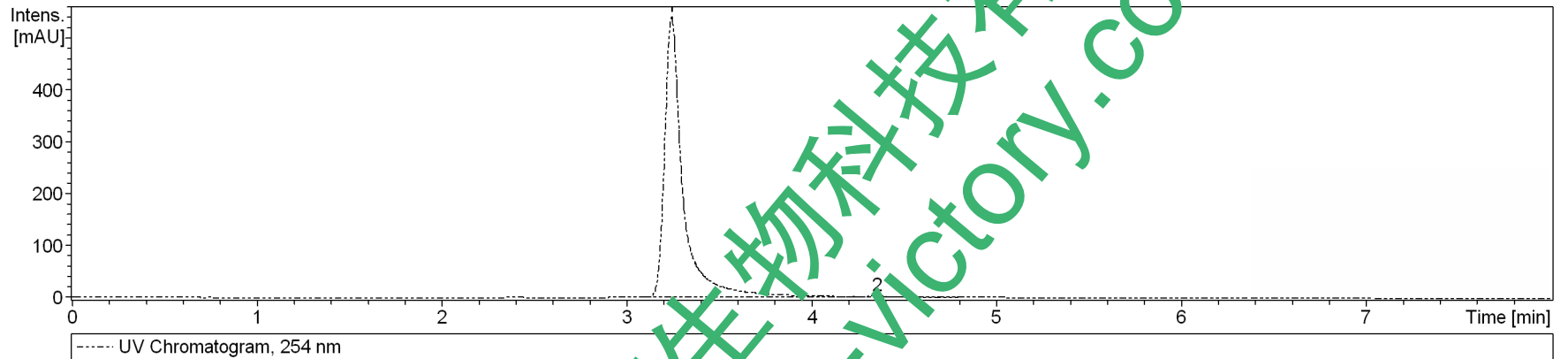
Analysis Info

Analysis Name D:\Data\test\0713\xishujian_99_01_1914.d
Method 1914.m
Sample Name xishujian
Comment

Operator bruker
Instrument amaZon SL

Acquisition Parameter

Ion Source Type	ESI	Ion Polarity	Positive	Alternating Ion Polarity	on
Mass Range Mode	UltraScan	Scan Begin	70 m/z	Scan End	1000 m/z
Capillary Exit	140.0 V	n/a	n/a	Trap Drive	50.6
Accumulation Time	1371 μ s	Averages	5 Spectra	Auto MS/MS	off



#	RT [min]	Area	Height	Area Frac. %
1	3.2	3811.713	542	99.0
2	4.4	39.732	3	1.0

Display Report

Analysis Info

Analysis Name D:\Data\test\0713\xishujian_99_01_1914.d
Method 1914.m
Sample Name xishujian
Comment

Operator
Instrument bruker
amaZon SL

Acquisition Parameter

Ion Source Type	ESI	Ion Polarity	Positive	Alternating Ion Polarity	on
Mass Range Mode	UltraScan	Scan Begin	70 m/z	Scan End	1000 m/z
Capillary Exit	140.0 V	n/a	n/a	Trap Drive	50.6
Accumulation Time	1371 μ s	Averages	5 Spectra	Auto MS/MS	off

