

```
Current Data Parameters
NAME      xishujian
EXPNO    2
PROCNO   1

F2 - Acquisition Parameters
=====
INSTRUM   spect
PROBHD    5 mm PABBO BB-
PULPROG   zgpg30
TD        65536
SOLVENT   DMSO
DS        369
D1        4
SWH       24038.461 Hz
FIDRES    0.366798 Hz
AQ        1.3631988 sec
RG        194.85
DW        20.800 usec
DE        6.50 usec
TE        303.0 K
D1        2.0000000 sec
D11       0.0300000 sec
TD0       1

===== CHANNEL f1 =====
NUC1      13C
P1        9.24 usec
PLW1     95.0000000 W
SFO1     100.6228293 MHz

===== CHANNEL f2 =====
CPDPRG2   waltz16
NUC2      1H
PCPD2     80.00 usec
PLW2     19.0000000 W
PLW12    0.2529200 W
PLW13    0.1618700 W
SFO2     400.1316005 MHz

F2 - Processing parameters
SI        32768
SF        100.6128190 MHz
WDW       EM
SSB       0
LB        1.00 Hz
GB        0
PC        1.40
```

成都普菲德生物科技有限公司  
http://www.sc-victory.com



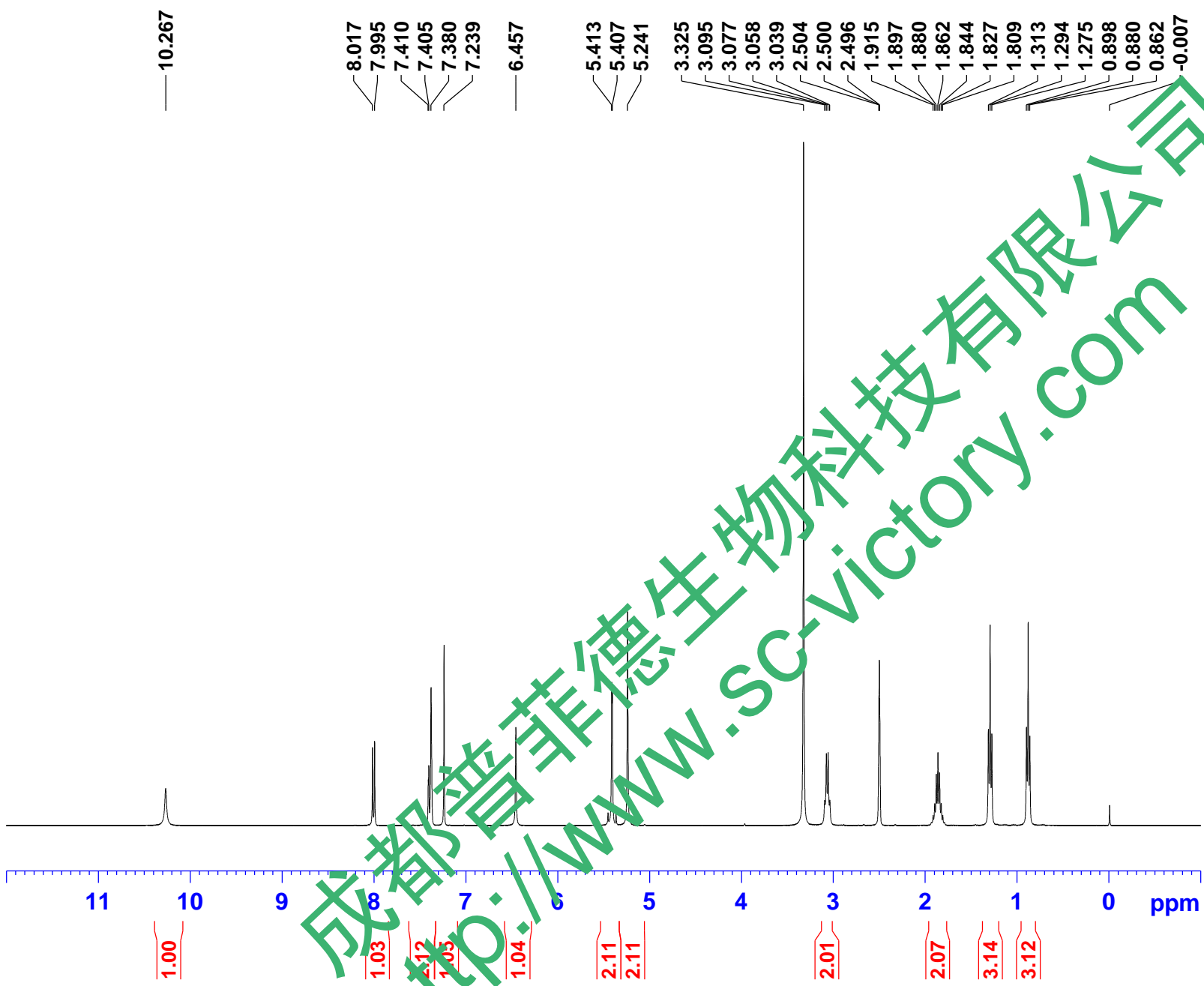
Current Data Parameters  
NAME xishujian  
EXPNO 1  
PROCNO 1

F2 - Acquisition Parameters

INSTRUM spect  
PROBHD 5 mm PABBO BB-  
PULPROG zg30  
TD 65536  
SOLVENT DMSO  
NS 16  
DS 2  
SWH 8223.685 Hz  
FIDRES 0.125483 Hz  
AQ 3.9846387 sec  
RG 78.31  
DW 60.800 usec  
DE 6.50 usec  
TE 302.5 K  
D1 1.0000000 sec  
TD0 1

==== CHANNEL f1 =====  
NUC1 1H  
P1 9.23 usec  
PLW1 20.0000000 W  
SFO1 400.1324710 MHz

F2 - Processing parameters  
SI 65536  
SF 400.1300037 MHz  
WDW EM  
SSB 0  
LB 0.30 Hz  
GB 0  
PC 1.00



成都普菲德生物科技有限公司  
http://www.sc-victory.com